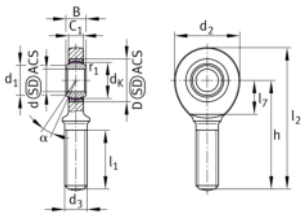


**GAL45-UK-2RS**

Cabeza de rótula

Rod end with external thread, left hand thread, maintenance-free, sliding layer: ELGOGLIDE, DIN ISO 12240-4, dimension series E, type M, inner ring curved surface with hard chromium coating, sealed

Información técnica



Variante de su producto actual

| | | |
|-----------------------------|------------------------|--------------------------------------|
| Thread type | Not clampable | |
| Mounting bolt | External thread | |
| Engrasadores | Cannot be relubricated | |
| Roscado – pasador roscado | No | |
| Thread | Left-hand thread | |
| Maintenance | Maintenance free | |
| Obturaciones | 2RS | Obturaciones de labio en ambos lados |
| Material de capa deslizante | ELGOGLIDE | |

Medidas principales y datos de rendimiento

| | | |
|-------------|-----------|-------------------------------------|
| d_2 | 102 mm | Outer diameter eye |
| C_r | 360.000 N | Basic dynamic load rating |
| C_{0r} | 259.000 N | Basic static load rating |
| d | 45 mm | Diámetro del agujero del rodamiento |
| D | 68 mm | Diámetro exterior del rodamiento |
| l_2 | 214 mm | Total length |
| B | 32 mm | Width inner ring |
| $\approx m$ | 2,607 kg | Peso |



Medidas

| | | |
|------------|-----------|--|
| d_k | 60 mm | Diámetro de bola |
| d_1 | 50,7 mm | Outer flange diameter inner ring |
| d_3 | M42x3 | Tamaño de rosca |
| h | 163 mm | Length of thread |
| C_1 | 27 mm | Anchura de la cabeza de rótula |
| α | 7 ° | Tilt angle |
| l_1 | 94 mm | Thread length |
| l_7 | 52 mm | Length of the flat surface from the bearing bore centre to the shank |
| B_{UT} | -0,12 mm | Width inner ring , lower tolerance |
| B_{OT} | 0 mm | Width inner ring; upper tolerance |
| d_{UT} | -0,012 mm | Bore diameter, lower tolerance |
| d_{OT} | 0 mm | Bore diameter bearing upper tolerance |
| G_r | 0 - 0,06 | Radial clearance |
| G_{rmax} | 0,06 mm | Radial clearance, maximum |
| G_{rmin} | 0 mm | Radial clearance, minimum |

Rango de temperatura

| | | |
|-----------|--------|------------------------------------|
| T_{min} | -30 °C | Temperatura mín. de funcionamiento |
| T_{max} | 130 °C | Temperatura máx. de funcionamiento |

Medidas de montaje

| | | |
|----------|--------|---|
| r_{1s} | 0,6 mm | Smallest single chamfer dimension, inner ring |
|----------|--------|---|



Características



Carga radial



Carga axial en un sentido



Carga axial en ambos sentidos



Lubricación de por vida, ausencia de mantenimiento



Obturado en ambos lados



Errores de alineación estáticos



Errores de alineación dinámicos