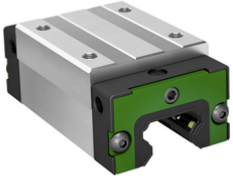


**KWLTS25-H**

Carro con recirculación de bolas

High carriage, short end plate, for four-row linear recirculating ball bearing and guideway assembly



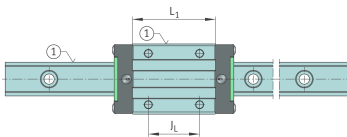
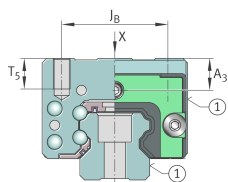
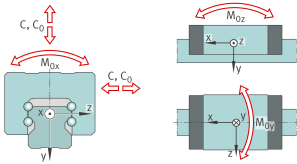
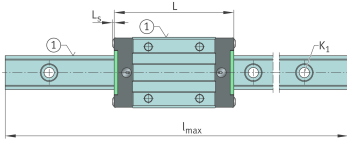
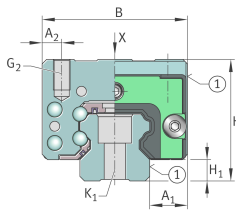
Información técnica

Variante de su producto actual

Size code	25	
Carriage design	H	High design

Medidas principales y datos de rendimiento

H	40 mm	Altura sistema
B	48 mm	Width carriage
L	77,6 mm	Overall length carriage
C	19.900 N	Capacidad de carga dinámica
C ₀	36.500 N	Capacidad de carga estática
M _{0x}	480 Nm	Static moment rating about X-axis
M _{0y}	340 Nm	Static moment rating about Y-axis
M _{0z}	340 Nm	Static moment rating about Z-axis
M _{0x}	240 Nm	Dynamic moment rating about X-axis
M _{0y}	305 Nm	Dynamic moment rating about y-axis
M _{0z}	305 Nm	Dynamic moment rating about Z-axis
≈m	0,52 kg	Peso





Medidas de montaje

A ₁	12,5 mm	
A ₂	6,5 mm	
L ₁	57 mm	Carrier length
H ₁	7 mm	
J _B	35 mm	
J _L	35 mm	
A ₃	10,5 mm	Posición del conector de lubricación
T ₅	10 mm	
G ₂	M6	Thread size, DIN ISO 4762-12.9
G2 M _A	16,5 Nm	Par de apriete máximo

Información adicional

VMKB_065	KWLTS	Nombre de material
----------	-------	--------------------