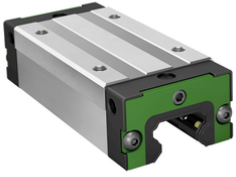


**KWLTS20-S**

## Carro con recirculación de bolas

Slim carriage, short end plate, for four-row linear recirculating ball bearing and guideway assembly



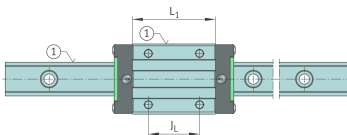
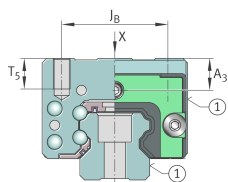
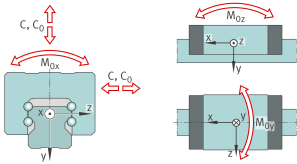
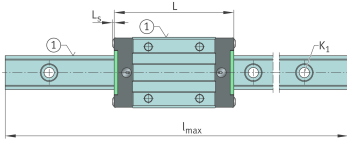
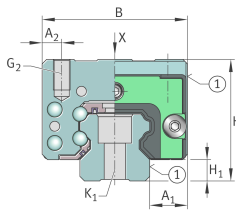
## Información técnica

## Variante de su producto actual

Size code	20	
Carriage design	S	Narrow design

## Medidas principales y datos de rendimiento

H	30 mm	Altura sistema
B	44 mm	Width carriage
L	69 mm	Overall length carriage
C	12.300 N	Capacidad de carga dinámica
C <sub>0</sub>	22.400 N	Capacidad de carga estática
M <sub>0x</sub>	244 Nm	Static moment rating about X-axis
M <sub>0y</sub>	173 Nm	Static moment rating about Y-axis
M <sub>0z</sub>	173 Nm	Static moment rating about Z-axis
M <sub>0x</sub>	122 Nm	Dynamic moment rating about X-axis
M <sub>0y</sub>	154 Nm	Dynamic moment rating about y-axis
M <sub>0z</sub>	154 Nm	Dynamic moment rating about Z-axis
≈m	0,31 kg	Peso





### Medidas de montaje

---

A <sub>1</sub>	12 mm	
A <sub>2</sub>	6 mm	
L <sub>1</sub>	50 mm	Carrier length
H <sub>1</sub>	5 mm	
J <sub>B</sub>	32 mm	
J <sub>L</sub>	36 mm	
A <sub>3</sub>	5,7 mm	Posición del conector de lubricación
T <sub>5</sub>	6,5 mm	
G <sub>2</sub>	M5	Thread size, DIN ISO 4762-12.9
G2 M <sub>A</sub>	9,7 Nm	Par de apriete máximo

### Información adicional

---

VMKB_065	KWLTS	Nombre de material
----------	-------	--------------------