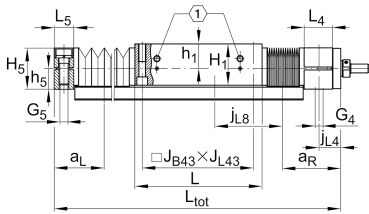
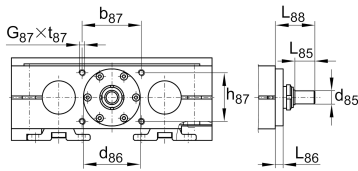
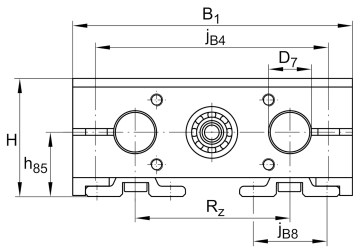
**LTS50-280-TR32x6-M-1** [↗](#)

Mesa lineal

Información técnica

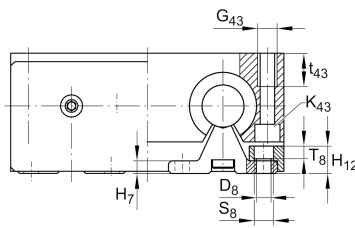
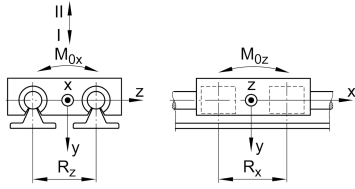
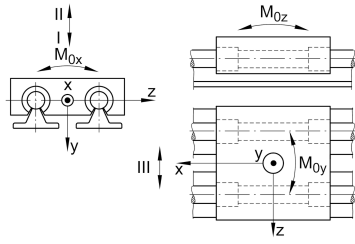


Variante de su producto actual

Size code	50	
Drive type	TGT	Trapezoidal screw drive
Length of carriage	280	280 mm
Spindle diameter	32	32mm
Spindle pitch	06	6 mm
Spindle nut design	M	Cylinder nut
Bellow	1	Yes

Medidas principales y datos de rendimiento

H	115 mm	Total Height
B 1	280 mm	Total Width
L	280 mm	Length of carriage



Medidas de montaje

D 7	50 mm	Tolerance h7
D 8	11 mm	
H 1	93 mm	Height of carriage
H 12	21 mm	
J B43	250 mm	
j B8	63 mm	
j L8	200 mm	
K 43	M12	
L tot	2.900 mm	Maximum length
R x	163 mm	
S	6 mm	Safety distance
S	17 mm	
T 8	9,5 mm	
t 43	34 mm	Depth of Thread
t 87	18 mm	Depth of Thread
B B	22 mm	Length of Bellows Fastener
F BL	1,22 mm	Effective length factor of bellow
b 87	62 mm	Tolerance ±0,2
d 85	16 mm	Diameter drive shaft, Tolerance h7
d 86	72 mm	Tolerance g7
G 4	M16	Thread
G 5	M16	Thread
G 87	M8	Thread
G 43	M16	Thread
h 5	44 mm	
h 85	60 mm	
h 87	62 mm	Tolerance ±0,2
J L43	250 mm	
J B4	240 mm	



Medidas

H ₇	9 mm	
h ₁	55 mm	
L ₄	42 mm	Length of Shaft Support Block with Drive System
L ₅	30 mm	Length of Shaft Support Block without drive System
L ₈₈	46 mm	
L ₈₆	9,4 mm	
R _z	152 mm	
H ₅	88 mm	Height of Shaft Support Blocks

Datos técnicos

v _{max}	0,15 m/s	Maximum Speed
a _{max}	2,5 m/s ²	Maximum Acceleration
d ₀	32 mm	Spindle Diameter
P	6 mm	Spindle Pitch
m _{LAW}	16,3 kg	Mass of Carriage
I _s	5,45 kg*cm ²	Mass moment of inertia of threaded Spindle
C _I	23.480 N	Load direction I: compressive load
C _{0I}	26.400 N	Load direction I: compressive load
C _{II}	14.200 N	Load direction II: tensile load
C _{0II}	16.800 N	Load direction II: tensile load
C _{III}	30.320 N	Load direction III: lateral load
C _{0III}	22.600 N	Load direction III: lateral load
C ₀	5.530 N	Load capacity Spindle Nut stat
C _{0a}	5.530 N	Load capacity fixed Spindle bearing stat
M _{0x}	1.180 Nm	Max. permissible static moment per Carriage
M _{0y}	1.580 Nm	Max. permissible static moment per Carriage
M _{0z}	1.250 Nm	Max. permissible static moment per Carriage



Información adicional

5 Nm	Max. permissible drive torque
3304-2RS	Rolling Bearings
5,45 kg*cm ²	Mass moment of inertia of threaded Spindle
KBO50-PP-AS	Bearing

Rango de temperatura

min	0 °C	Minimum operating Temperatur
max	80 °C	Maximum operating Temperatur