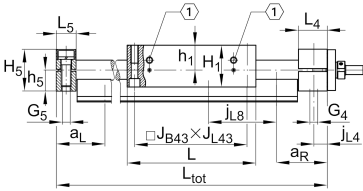
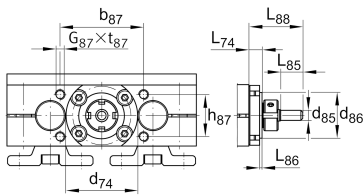
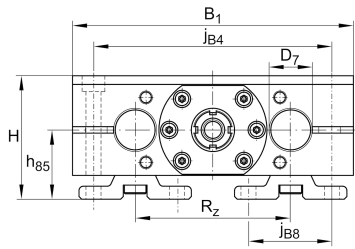


**LTS50-280-3220-MM-0** [↗](#)

Mesa lineal

## Información técnica

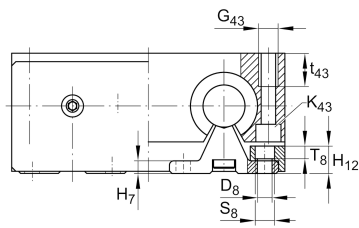
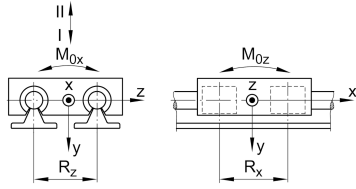
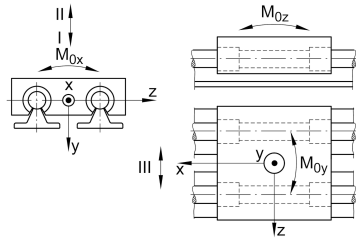


## Variante de su producto actual

Size code	50	
Drive type	KGT	Ball screw drive
Length of carriage	280	280 mm
Spindle diameter	32	32mm
Spindle pitch	20	20 mm
Spindle nut design	MM	Double cylinder nut
Bellow	0	No

## Medidas principales y datos de rendimiento

H	115 mm	Total Height
B 1	280 mm	Total Width
L	280 mm	Length of carriage

**Medidas de montaje**

D 7	50 mm	Tolerance h7
D 8	11 mm	
H 1	93 mm	Height of carriage
H 12	21 mm	
J B43	250 mm	
j B8	63 mm	
j L8	200 mm	
K 43	M12	
L tot	5,850 mm	Maximum length
R x	163 mm	
S	20 mm	Safety distance
S	17 mm	
T 8	9,5 mm	
t 43	34 mm	Depth of Thread
t 87	18 mm	Depth of Thread
b 87	62 mm	Tolerance $\pm 0,2$
d 85	16 mm	Diameter drive shaft, Tolerance h7
d 86	72 mm	Tolerance g7
G 4	M16	Thread
G 5	M16	Thread
G 87	M8	Thread
G 43	M16	Thread
h 5	44 mm	
h 85	60 mm	
h 87	62 mm	Tolerance $\pm 0,2$
J L43	250 mm	
j B4	240 mm	
J L4	15 mm	



### Medidas

H 7	9 mm	
h 1	55 mm	
L 4	42 mm	Length of Shaft Support Block with Drive System
L 5	30 mm	Length of Shaft Support Block without drive System
L 88	46 mm	
L 86	9,4 mm	
R z	152 mm	
H 5	88 mm	Height of Shaft Support Blocks



### Datos técnicos

$v_{\max}$	1 m/s	Maximum Speed
$a_{\max}$	10 m/s <sup>2</sup>	Maximum Acceleration
$d_0$	32 mm	Spindle Diameter
P	20 mm	Spindle Pitch
$m_{\text{LAW}}$	16,3 kg	Mass of Carriage
$I_s$	6,43 kg*cm <sup>2</sup>	Mass moment of inertia of threaded Spindle
$C_I$	23.480 N	Load direction I: compressive load
$C_{0I}$	26.400 N	Load direction I: compressive load
$C_{II}$	14.200 N	Load direction II: tensile load
$C_{0II}$	16.800 N	Load direction II: tensile load
$C_{III}$	30.320 N	Load direction III: lateral load
$C_{0III}$	22.600 N	Load direction III: lateral load
C	29.700 N	Load capacity Spindle Nut dyn
$C_0$	59.800 N	Load capacity Spindle Nut stat
$C_a$	26.000 N	Load capacity fixed Spindle bearing dyn
$C_{0a}$	47.000 N	Load capacity fixed Spindle bearing stat
$M_{0x}$	1.180 Nm	Max. permissible static moment per Carriage
$M_{0y}$	1.580 Nm	Max. permissible static moment per Carriage
$M_{0z}$	1.250 Nm	Max. permissible static moment per Carriage

### Información adicional

50 Nm	Max. permissible drive torque
ZKLN2052.2RS-PE	Rolling Bearings
0,025 mm	Repeat Accuracy ±
6,43 kg*cm <sup>2</sup>	Mass moment of inertia of threaded Spindle
KBO50-PP-AS	Bearing



### Rango de temperatura

---

min	0 °C	Minimum operating Temperatur
max	80 °C	Maximum operating Temperatur