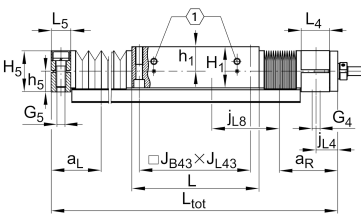
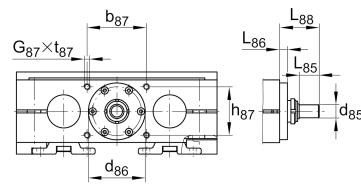
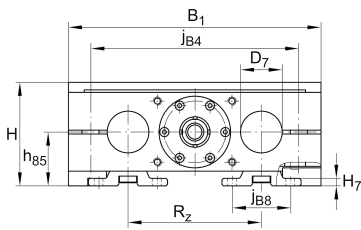


**LTS50-280-3210-MM-1** [↗](#)

Mesa lineal

Información técnica

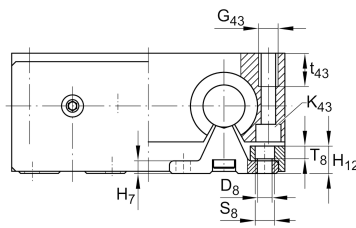
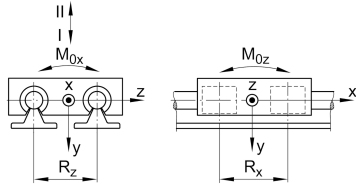
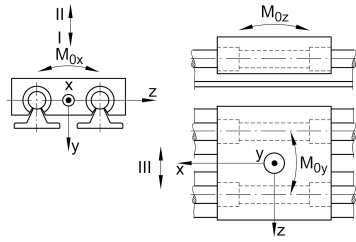


Variante de su producto actual

Size code	50	
Drive type	KGT	Ball screw drive
Length of carriage	280	280 mm
Spindle diameter	32	32mm
Spindle pitch	10	10 mm
Spindle nut design	MM	Double cylinder nut
Bellow	1	Yes

Medidas principales y datos de rendimiento

H	115 mm	Total Height
B 1	280 mm	Total Width
L	280 mm	Length of carriage



Medidas de montaje

D 7	50 mm	Tolerance h7
D 8	11 mm	
H 1	93 mm	Height of carriage
H 12	21 mm	
J B43	250 mm	
j B8	63 mm	
j L8	200 mm	
K 43	M12	
L tot	5.600 mm	Maximum length
R x	163 mm	
S	10 mm	Safety distance
S	17 mm	
T 8	9,5 mm	
t 43	34 mm	Depth of Thread
t 87	18 mm	Depth of Thread
B B	22 mm	Length of Bellows Fastener
F BL	1,22 mm	Effective length factor of bellow
b 87	62 mm	Tolerance ±0,2
d 85	16 mm	Diameter drive shaft, Tolerance h7
d 86	72 mm	Tolerance g7
G 4	M16	Thread
G 5	M16	Thread
G 87	M8	Thread
G 43	M16	Thread
h 5	44 mm	
h 85	60 mm	
h 87	62 mm	Tolerance ±0,2
J L43	250 mm	
J B4	240 mm	



Medidas

H 7	9 mm	
h 1	55 mm	
L 4	42 mm	Length of Shaft Support Block with Drive System
L 5	30 mm	Length of Shaft Support Block without drive System
L 88	46 mm	
L 86	9,4 mm	
R z	152 mm	
H 5	88 mm	Height of Shaft Support Blocks



Datos técnicos

v_{\max}	0,5 m/s	Maximum Speed
a_{\max}	10 m/s ²	Maximum Acceleration
d_0	32 mm	Spindle Diameter
P	10 mm	Spindle Pitch
m_{LAW}	16,3 kg	Mass of Carriage
I_s	6,43 kg*cm ²	Mass moment of inertia of threaded Spindle
C_I	23.480 N	Load direction I: compressive load
C_{0I}	26.400 N	Load direction I: compressive load
C_{II}	14.200 N	Load direction II: tensile load
C_{0II}	16.800 N	Load direction II: tensile load
C_{III}	30.320 N	Load direction III: lateral load
C_{0III}	22.600 N	Load direction III: lateral load
C	33.400 N	Load capacity Spindle Nut dyn
C_0	54.500 N	Load capacity Spindle Nut stat
C_a	26.000 N	Load capacity fixed Spindle bearing dyn
C_{0a}	47.000 N	Load capacity fixed Spindle bearing stat
M_{0x}	1.180 Nm	Max. permissible static moment per Carriage
M_{0y}	1.580 Nm	Max. permissible static moment per Carriage
M_{0z}	1.250 Nm	Max. permissible static moment per Carriage

Información adicional

50 Nm	Max. permissible drive torque
ZKLN2052.2RS-PE	Rolling Bearings
0,025 mm	Repeat Accuracy ±
6,43 kg*cm ²	Mass moment of inertia of threaded Spindle
KBO50-PP-AS	Bearing



Rango de temperatura

min	0 °C	Minimum operating Temperatur
max	80 °C	Maximum operating Temperatur