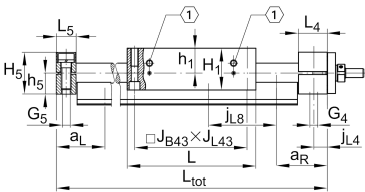
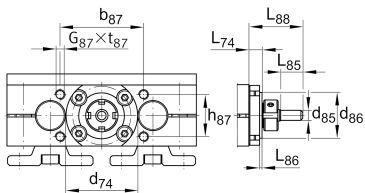
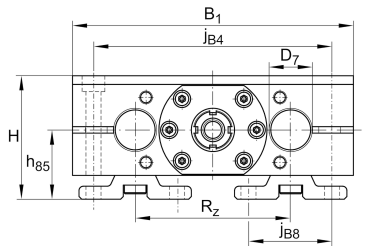


**LTS50-280-2505-MM-0** [↗](#)

Mesa lineal

## Información técnica

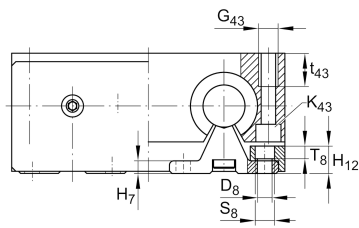
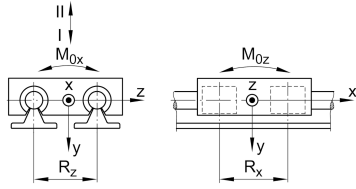
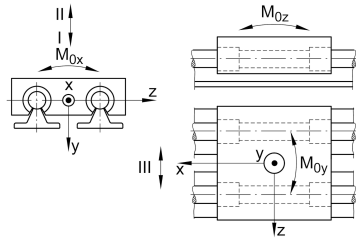


## Variante de su producto actual

Size code	50	
Drive type	KGT	Ball screw drive
Length of carriage	280	280 mm
Spindle diameter	25	25mm
Spindle pitch	05	5 mm
Spindle nut design	MM	Double cylinder nut
Bellow	0	No

## Medidas principales y datos de rendimiento

H	115 mm	Total Height
B 1	280 mm	Total Width
L	280 mm	Length of carriage



**Medidas de montaje**

D 7	50 mm	Tolerance h7
D 8	11 mm	
H 1	93 mm	Height of carriage
H 12	21 mm	
J B43	250 mm	
j B8	63 mm	
j L8	200 mm	
K 43	M12	
L tot	5,850 mm	Maximum length
R x	163 mm	
S	5 mm	Safety distance
S	17 mm	
T 8	9,5 mm	
t 43	34 mm	Depth of Thread
t 87	18 mm	Depth of Thread
b 87	62 mm	Tolerance ±0,2
d 85	16 mm	Diameter drive shaft, Tolerance h7
d 86	66 mm	Tolerance g7
G 4	M16	Thread
G 5	M16	Thread
G 87	M8	Thread
G 43	M16	Thread
h 5	44 mm	
h 85	60 mm	
h 87	62 mm	Tolerance ±0,2
J L43	250 mm	
j B4	240 mm	
J L4	15 mm	



### Medidas

H 7	9 mm	
h 1	55 mm	
L 4	39 mm	Length of Shaft Support Block with Drive System
L 5	30 mm	Length of Shaft Support Block without drive System
L 88	46 mm	
L 86	9,4 mm	
R z	152 mm	
H 5	88 mm	Height of Shaft Support Blocks



### Datos técnicos

$v_{max}$	0,25 m/s	Maximum Speed
$a_{max}$	10 m/s <sup>2</sup>	Maximum Acceleration
$d_0$	25 mm	Spindle Diameter
P	5 mm	Spindle Pitch
$m_{LAW}$	15,8 kg	Mass of Carriage
$I_s$	2,25 kg*cm <sup>2</sup>	Mass moment of inertia of threaded Spindle
$C_I$	23.480 N	Load direction I: compressive load
$C_{0I}$	26.400 N	Load direction I: compressive load
$C_{II}$	14.200 N	Load direction II: tensile load
$C_{0II}$	16.800 N	Load direction II: tensile load
$C_{III}$	30.320 N	Load direction III: lateral load
$C_{0III}$	22.600 N	Load direction III: lateral load
C	12.300 N	Load capacity Spindle Nut dyn
$C_0$	22.500 N	Load capacity Spindle Nut stat
$C_a$	18.800 N	Load capacity fixed Spindle bearing dyn
$C_{0a}$	31.000 N	Load capacity fixed Spindle bearing stat
$M_{0x}$	1.180 Nm	Max. permissible static moment per Carriage
$M_{0y}$	1.580 Nm	Max. permissible static moment per Carriage
$M_{0z}$	1.250 Nm	Max. permissible static moment per Carriage

### Información adicional

	12 Nm	Max. permissible drive torque
	ZKLN1747.2RS-PE	Rolling Bearings
	0,025 mm	Repeat Accuracy ±
	2,25 kg*cm <sup>2</sup>	Mass moment of inertia of threaded Spindle
	KBO50-PP-AS	Bearing



### Rango de temperatura

---

min	0 °C	Minimum operating Temperatur
max	80 °C	Maximum operating Temperatur