**LTS50-280-1** [↗](#)

Mesa lineal

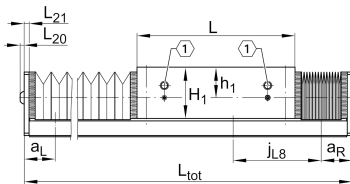
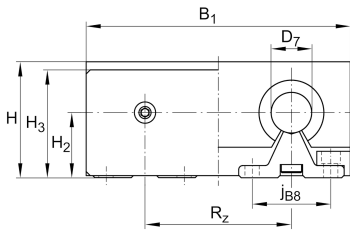
## Información técnica

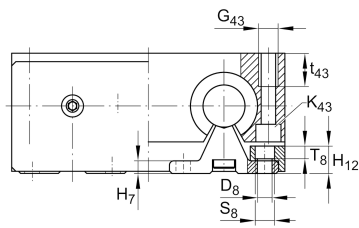
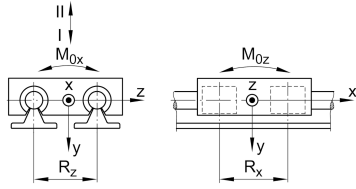
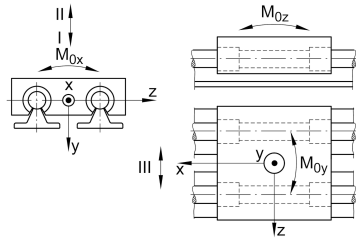
## Variante de su producto actual

Size code	50	
Drive type	OA	Without drive
Length of carriage	280	280 mm
Bellow	1	Yes

## Medidas principales y datos de rendimiento

H	115 mm	Total Height
B <sub>1</sub>	280 mm	Total Width
L	280 mm	Length of carriage





### Medidas de montaje

D 7	50 mm	Tolerance h7
D 8	11 mm	
H 1	93 mm	Height of carriage
H 12	21 mm	
H 2	60 mm	
H 3	104 mm	
J B43	250 mm	
j B8	63 mm	
j L8	200 mm	
K 43	M12	
L 20	4,4 mm	
L 21	4 mm	
L tot	6.000 mm	Maximum length
R x	163 mm	
S	17 mm	
T 8	9,5 mm	
t 43	34 mm	Depth of Thread
B B	30 mm	Length of Bellows Fastener
F BL	1,22 mm	Effective length factor of bellow
G 43	M16	Thread
J L43	250 mm	

### Medidas

H 7	9 mm	
h 1	55 mm	
R z	152 mm	



### Datos técnicos

$v_{max}$	5 m/s	Maximum Speed
$a_{max}$	20 m/s <sup>2</sup>	Maximum Acceleration
$m_{LAW}$	16,1 kg	Mass of Carriage
$C_I$	23.480 N	Load direction I: compressive load
$C_{0I}$	26.400 N	Load direction I: compressive load
$C_{II}$	14.200 N	Load direction II: tensile load
$C_{0II}$	16.800 N	Load direction II: tensile load
$C_{III}$	30.320 N	Load direction III: lateral load
$C_{0III}$	22.600 N	Load direction III: lateral load
$M_{0x}$	1.180 Nm	Max. permissible static moment per Carriage
$M_{0y}$	1.580 Nm	Max. permissible static moment per Carriage
$M_{0z}$	1.250 Nm	Max. permissible static moment per Carriage

### Información adicional

KBO50-PP-AS Bearing

### Rango de temperatura

min	0 °C	Minimum operating Temperatur
max	80 °C	Maximum operating Temperatur