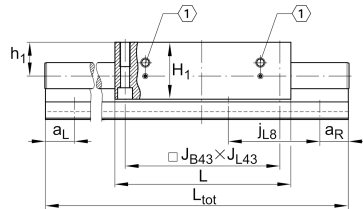
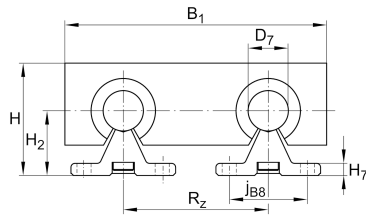
**LTS50-280-0** [↗](#)

Mesa lineal

Información técnica

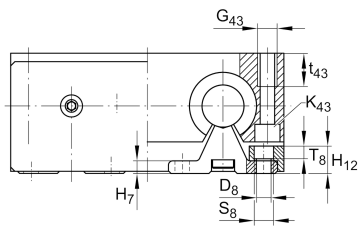
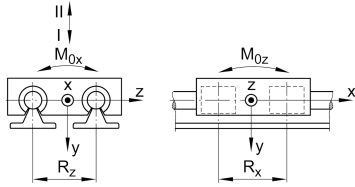


Variante de su producto actual

Size code	50	
Drive type	OA	Without drive
Length of carriage	280	280 mm
Bellow	0	No

Medidas principales y datos de rendimiento

H	115 mm	Total Height
B ₁	280 mm	Total Width
L	280 mm	Length of carriage



Medidas de montaje

D 7	50 mm	Tolerance h7
D 8	11 mm	
H 1	93 mm	Height of carriage
H 12	21 mm	
H 2	60 mm	
J B43	250 mm	
j B8	63 mm	
j L8	200 mm	
K 43	M12	
L 20	4,4 mm	
L 21	4 mm	
L tot	6.000 mm	Maximum length
R x	163 mm	
S	17 mm	
T 8	9,5 mm	
t 43	34 mm	Depth of Thread
G 43	M16	Thread
J L43	250 mm	

Medidas

H 7	9 mm
h 1	55 mm
R z	152 mm



Datos técnicos

v_{\max}	5 m/s	Maximum Speed
a_{\max}	20 m/s ²	Maximum Acceleration
m_{LAW}	16,1 kg	Mass of Carriage
C_{I}	23.480 N	Load direction I: compressive load
C_{0I}	26.400 N	Load direction I: compressive load
C_{II}	14.200 N	Load direction II: tensile load
C_{0II}	16.800 N	Load direction II: tensile load
C_{III}	30.320 N	Load direction III: lateral load
C_{0III}	22.600 N	Load direction III: lateral load
M_{0x}	1.180 Nm	Max. permissible static moment per Carriage
M_{0y}	1.580 Nm	Max. permissible static moment per Carriage
M_{0z}	1.250 Nm	Max. permissible static moment per Carriage

Información adicional

KBO50-PP-AS Bearing

Rango de temperatura

min	0 °C	Minimum operating Temperatur
max	80 °C	Maximum operating Temperatur