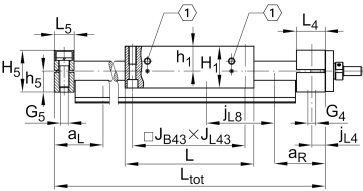
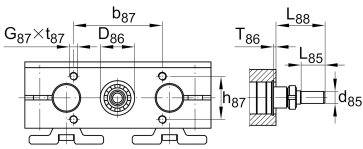
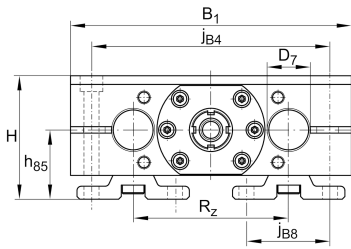
**LTS40-230-TR24x5-M-0**

Mesa lineal

## Información técnica

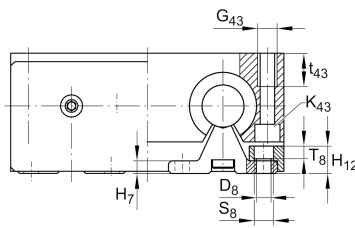
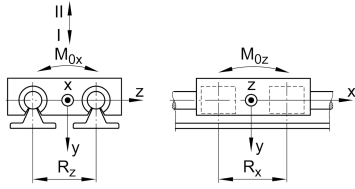


## Variante de su producto actual

Size code	40	indicación de tamaño
Drive type	TGT	Trapezoidal screw drive
Length of carriage	230	230 mm
Spindle diameter	24	24mm
Spindle pitch	05	5 mm
Spindle nut design	M	Cylinder nut
Bellow	0	No

## Medidas principales y datos de rendimiento

H	95 mm	Total Height
B 1	230 mm	Total Width
L	230 mm	Length of carriage



**Medidas de montaje**

D 7	40 mm	Tolerance h7
D 8	9 mm	
H 1	77 mm	Height of carriage
H 12	17 mm	
J B43	202 mm	
j B8	55 mm	
j L8	200 mm	
K 43	M12	
L tot	2.900 mm	Maximum length
R x	134 mm	
S	5 mm	Safety distance
S	15 mm	
T 8	7,5 mm	
t 43	34 mm	Depth of Thread
t 87	18 mm	Depth of Thread
b 87	68 mm	Tolerance ±0,2
d 85	16 mm	Diameter drive shaft, Tolerance h7
d 86	66 mm	Tolerance g7
G 4	M16	Thread
G 5	M16	Thread
G 87	M8	Thread
G 43	M16	Thread
h 5	36 mm	
h 85	50 mm	
h 87	56 mm	Tolerance ±0,2
J L43	202 mm	
j B4	190 mm	
J L4	15 mm	



### Medidas

H <sub>7</sub>	8 mm	
h <sub>1</sub>	45 mm	
L <sub>4</sub>	39 mm	Length of Shaft Support Block with Drive System
L <sub>5</sub>	30 mm	Length of Shaft Support Block without drive System
L <sub>88</sub>	46 mm	
L <sub>86</sub>	9,4 mm	
R <sub>z</sub>	122 mm	
H <sub>5</sub>	72 mm	Height of Shaft Support Blocks

### Datos técnicos

v <sub>max</sub>	0,125 m/s	Maximum Speed
a <sub>max</sub>	2,5 m/s <sup>2</sup>	Maximum Acceleration
d <sub>0</sub>	24 mm	Spindle Diameter
P	5 mm	Spindle Pitch
m <sub>LAW</sub>	9,2 kg	Mass of Carriage
I <sub>s</sub>	1,65 kg*cm <sup>2</sup>	Mass moment of inertia of threaded Spindle
C <sub>I</sub>	16.100 N	Load direction I: compressive load
C <sub>0I</sub>	18.400 N	Load direction I: compressive load
C <sub>II</sub>	9.760 N	Load direction II: tensile load
C <sub>0II</sub>	12.500 N	Load direction II: tensile load
C <sub>III</sub>	14.910 N	Load direction III: lateral load
C <sub>0III</sub>	16.800 N	Load direction III: lateral load
C <sub>0</sub>	2.500 N	Load capacity Spindle Nut stat
C <sub>0a</sub>	2.500 N	Load capacity fixed Spindle bearing stat
M <sub>0x</sub>	670 Nm	Max. permissible static moment per Carriage
M <sub>0y</sub>	960 Nm	Max. permissible static moment per Carriage
M <sub>0z</sub>	730 Nm	Max. permissible static moment per Carriage



### Información adicional

5 Nm	Max. permissible drive torque
3303-2RS	Rolling Bearings
1,65 kg*cm <sup>2</sup>	Mass moment of inertia of threaded Spindle
KBO40-PP-AS	Bearing

### Rango de temperatura

min	80 °C	Minimum operating Temperatur
max	0 °C	Maximum operating Temperatur