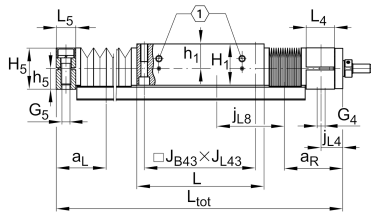
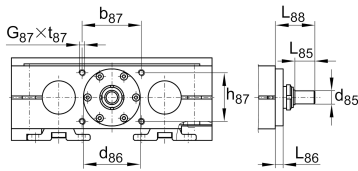
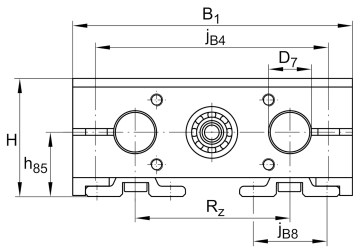
**LTS40-230-TR24x10-M-1** [↗](#)

Mesa lineal

## Información técnica

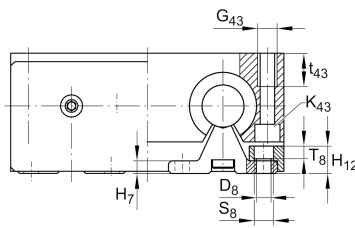
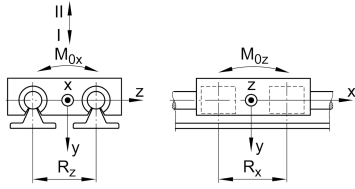
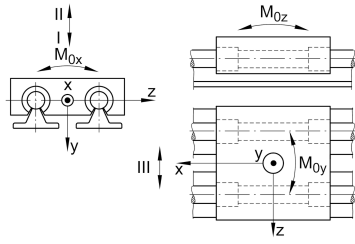


## Variante de su producto actual

Size code	40	indicación de tamaño
Drive type	TGT	Trapezoidal screw drive
Length of carriage	230	230 mm
Spindle diameter	24	24mm
Spindle pitch	10	10 mm
Spindle nut design	M	Cylinder nut
Bellow	1	Yes

## Medidas principales y datos de rendimiento

H	95 mm	Total Height
B 1	230 mm	Total Width
L	230 mm	Length of carriage



**Medidas de montaje**

D 7	40 mm	Tolerance h7
D 8	9 mm	
H 1	77 mm	Height of carriage
H 12	17 mm	
J B43	202 mm	
j B8	55 mm	
j L8	200 mm	
K 43	M12	
L tot	2.900 mm	Maximum length
R x	134 mm	
S	10 mm	Safety distance
S	15 mm	
T 8	7,5 mm	
t 43	34 mm	Depth of Thread
t 87	18 mm	Depth of Thread
B B	22 mm	Length of Bellows Fastener
F BL	1,27 mm	Effective length factor of bellow
b 87	68 mm	Tolerance ±0,2
d 85	16 mm	Diameter drive shaft, Tolerance h7
d 86	66 mm	Tolerance g7
G 4	M16	Thread
G 5	M16	Thread
G 87	M8	Thread
G 43	M16	Thread
h 5	36 mm	
h 85	50 mm	
h 87	56 mm	Tolerance ±0,2
J L43	202 mm	
J B4	190 mm	



### Medidas

H <sub>7</sub>	8 mm	
h <sub>1</sub>	45 mm	
L <sub>4</sub>	39 mm	Length of Shaft Support Block with Drive System
L <sub>5</sub>	30 mm	Length of Shaft Support Block without drive System
L <sub>88</sub>	46 mm	
L <sub>86</sub>	9,4 mm	
R <sub>z</sub>	122 mm	
H <sub>5</sub>	72 mm	Height of Shaft Support Blocks

### Datos técnicos

v <sub>max</sub>	0,25 m/s	Maximum Speed
a <sub>max</sub>	2,5 m/s <sup>2</sup>	Maximum Acceleration
d <sub>0</sub>	24 mm	Spindle Diameter
P	10 mm	Spindle Pitch
m <sub>LAW</sub>	9,2 kg	Mass of Carriage
I <sub>s</sub>	1,65 kg*cm <sup>2</sup>	Mass moment of inertia of threaded Spindle
C <sub>I</sub>	16.100 N	Load direction I: compressive load
C <sub>0I</sub>	18.400 N	Load direction I: compressive load
C <sub>II</sub>	9.760 N	Load direction II: tensile load
C <sub>0II</sub>	12.500 N	Load direction II: tensile load
C <sub>III</sub>	14.910 N	Load direction III: lateral load
C <sub>0III</sub>	16.800 N	Load direction III: lateral load
C <sub>0</sub>	2.500 N	Load capacity Spindle Nut stat
C <sub>0a</sub>	2.500 N	Load capacity fixed Spindle bearing stat
M <sub>0x</sub>	670 Nm	Max. permissible static moment per Carriage
M <sub>0y</sub>	960 Nm	Max. permissible static moment per Carriage
M <sub>0z</sub>	730 Nm	Max. permissible static moment per Carriage



### Información adicional

5 Nm	Max. permissible drive torque
3303-2RS	Rolling Bearings
1,65 kg*cm <sup>2</sup>	Mass moment of inertia of threaded Spindle
KBO40-PP-AS	Bearing

### Rango de temperatura

min	0 °C	Minimum operating Temperatur
max	80 °C	Maximum operating Temperatur