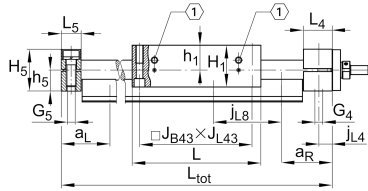
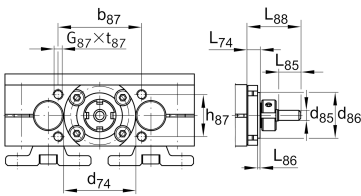
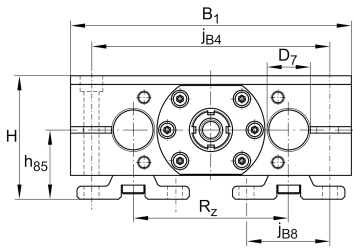


**LTS40-230-3240-M-0**

Mesa lineal

Información técnica

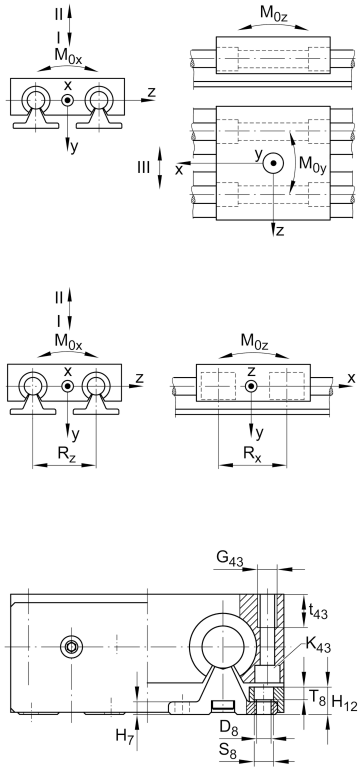


Variante de su producto actual

Size code	40	indicación de tamaño
Drive type	KGT	Ball screw drive
Length of carriage	230	230 mm
Spindle diameter	32	32mm
Spindle pitch	40	40 mm
Spindle nut design	M	Cylinder nut
Bellow	0	No

Medidas principales y datos de rendimiento

H	95 mm	Total Height
B 1	230 mm	Total Width
L	230 mm	Length of carriage



Medidas de montaje

D 7	40 mm	Tolerance h7
D 8	9 mm	
H 1	77 mm	Height of carriage
H 12	17 mm	
J B43	202 mm	
j B8	55 mm	
j L8	200 mm	
K 43	M12	
L tot	5,850 mm	Maximum length
R x	134 mm	
S	40 mm	Safety distance
S	15 mm	
T 8	7,5 mm	
t 43	34 mm	Depth of Thread
t 87	18 mm	Depth of Thread
b 87	68 mm	Tolerance ±0,2
d 85	16 mm	Diameter drive shaft, Tolerance h7
d 86	72 mm	Tolerance g7
G 4	M16	Thread
G 5	M16	Thread
G 87	M8	Thread
G 43	M16	Thread
h 5	36 mm	
h 85	50 mm	
h 87	56 mm	Tolerance ±0,2
J L43	202 mm	
j B4	190 mm	
J L4	15 mm	



Medidas

H 7	8 mm	
h 1	45 mm	
L 4	42 mm	Length of Shaft Support Block with Drive System
L 5	30 mm	Length of Shaft Support Block without drive System
L 88	46 mm	
L 86	9,4 mm	
R z	122 mm	
H 5	72 mm	Height of Shaft Support Blocks



Datos técnicos

v_{max}	2 m/s	Maximum Speed
a_{max}	20 m/s ²	Maximum Acceleration
d_0	32 mm	Spindle Diameter
P	40 mm	Spindle Pitch
m_{LAW}	9,2 kg	Mass of Carriage
I_s	6,43 kg*cm ²	Mass moment of inertia of threaded Spindle
C_I	16.100 N	Load direction I: compressive load
C_{0I}	18.400 N	Load direction I: compressive load
C_{II}	9.760 N	Load direction II: tensile load
C_{0II}	12.500 N	Load direction II: tensile load
C_{III}	14.910 N	Load direction III: lateral load
C_{0III}	16.800 N	Load direction III: lateral load
C	14.900 N	Load capacity Spindle Nut dyn
C_0	32.400 N	Load capacity Spindle Nut stat
C_a	26.000 N	Load capacity fixed Spindle bearing dyn
C_{0a}	47.000 N	Load capacity fixed Spindle bearing stat
M_{0x}	670 Nm	Max. permissible static moment per Carriage
M_{0y}	960 Nm	Max. permissible static moment per Carriage
M_{0z}	730 Nm	Max. permissible static moment per Carriage

Información adicional

	50 Nm	Max. permissible drive torque
	ZKLN2052.2RS-PE	Rolling Bearings
	0,05 mm	Repeat Accuracy ±
	6,43 kg*cm ²	Mass moment of inertia of threaded Spindle
	KBO40-PP-AS	Bearing



Rango de temperatura

min	0 °C	Minimum operating Temperatur
-----	------	------------------------------

max	80 °C	Maximum operating Temperatur
-----	-------	------------------------------