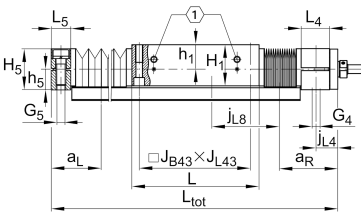
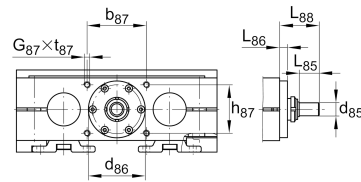
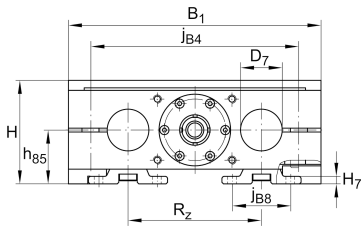


**LTS40-230-2505-M-1**

Mesa lineal

## Información técnica

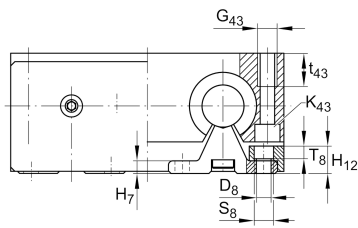
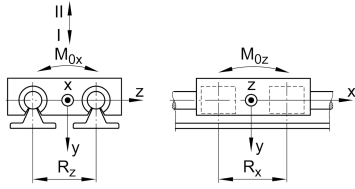
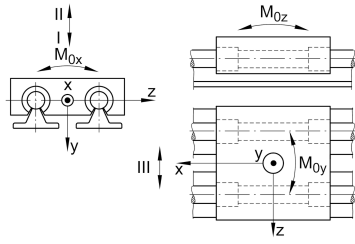


## Variante de su producto actual

Size code	40	indicación de tamaño
Drive type	KGT	Ball screw drive
Length of carriage	230	230 mm
Spindle diameter	25	25mm
Spindle pitch	05	5 mm
Spindle nut design	M	Cylinder nut
Bellow	1	Yes

## Medidas principales y datos de rendimiento

H	95 mm	Total Height
B <sub>1</sub>	230 mm	Total Width
L	230 mm	Length of carriage



**Medidas de montaje**

D 7	40 mm	Tolerance h7
D 8	9 mm	
H 1	77 mm	Height of carriage
H 12	17 mm	
J B43	202 mm	
j B8	55 mm	
j L8	200 mm	
K 43	M12	
L tot	5,600 mm	Maximum length
R x	134 mm	
S	5 mm	Safety distance
S	15 mm	
T 8	7,5 mm	
t 43	34 mm	Depth of Thread
t 87	18 mm	Depth of Thread
B B	22 mm	Length of Bellows Fastener
F BL	1,27 mm	Effective length factor of bellow
b 87	68 mm	Tolerance ±0,2
d 85	16 mm	Diameter drive shaft, Tolerance h7
d 86	66 mm	Tolerance g7
G 4	M16	Thread
G 5	M16	Thread
G 87	M8	Thread
G 43	M16	Thread
h 5	36 mm	
h 85	50 mm	
h 87	56 mm	Tolerance ±0,2
J L43	202 mm	
J B4	190 mm	



### Medidas

H 7	8 mm	
h 1	45 mm	
L 4	39 mm	Length of Shaft Support Block with Drive System
L 5	30 mm	Length of Shaft Support Block without drive System
L 88	46 mm	
L 86	9,4 mm	
R z	122 mm	
H 5	72 mm	Height of Shaft Support Blocks



### Datos técnicos

$v_{max}$	0,25 m/s	Maximum Speed
$a_{max}$	20 m/s <sup>2</sup>	Maximum Acceleration
$d_0$	25 mm	Spindle Diameter
P	5 mm	Spindle Pitch
$m_{LAW}$	8,8 kg	Mass of Carriage
$I_s$	2,25 kg*cm <sup>2</sup>	Mass moment of inertia of threaded Spindle
$C_I$	16.100 N	Load direction I: compressive load
$C_{0I}$	18.400 N	Load direction I: compressive load
$C_{II}$	9.760 N	Load direction II: tensile load
$C_{0II}$	12.500 N	Load direction II: tensile load
$C_{III}$	14.910 N	Load direction III: lateral load
$C_{0III}$	16.800 N	Load direction III: lateral load
C	12.300 N	Load capacity Spindle Nut dyn
$C_0$	22.500 N	Load capacity Spindle Nut stat
$C_a$	18.800 N	Load capacity fixed Spindle bearing dyn
$C_{0a}$	31.000 N	Load capacity fixed Spindle bearing stat
$M_{0x}$	670 Nm	Max. permissible static moment per Carriage
$M_{0y}$	960 Nm	Max. permissible static moment per Carriage
$M_{0z}$	730 Nm	Max. permissible static moment per Carriage

### Información adicional

	12 Nm	Max. permissible drive torque
	ZKLN1747.2RS-PE	Rolling Bearings
	0,05 mm	Repeat Accuracy ±
	2,25 kg*cm <sup>2</sup>	Mass moment of inertia of threaded Spindle
	KBO40-PP-AS	Bearing



### Rango de temperatura

---

min	0 °C	Minimum operating Temperatur
max	80 °C	Maximum operating Temperatur