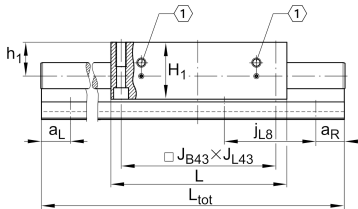
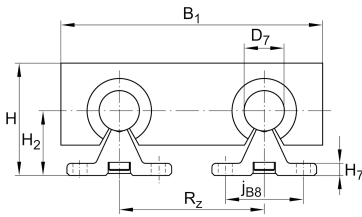


**LTS40-230-0** [↗](#)

Mesa lineal

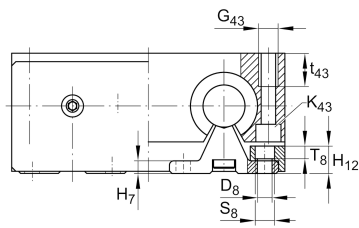
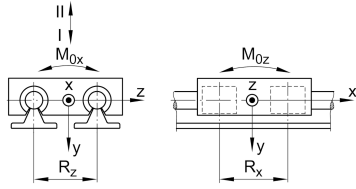
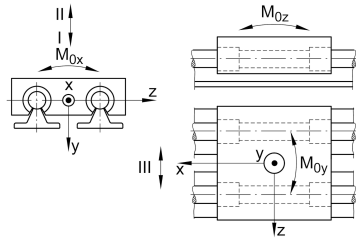
Información técnica

**Variante de su producto actual**

Size code	40	indicación de tamaño
Drive type	OA	Without drive
Length of carriage	230	230 mm
Bellow	0	No

Medidas principales y datos de rendimiento

H	95 mm	Total Height
B ₁	230 mm	Total Width
L	230 mm	Length of carriage



Medidas de montaje

D 7	40 mm	Tolerance h7
D 8	9 mm	
H 1	77 mm	Height of carriage
H 12	17 mm	
H 2	50 mm	
J B43	202 mm	
j B8	55 mm	
j L8	200 mm	
K 43	M12	
L 20	4,4 mm	
L 21	4 mm	
L tot	6.000 mm	Maximum length
R x	134 mm	
S	15 mm	
T 8	7,5 mm	
t 43	34 mm	Depth of Thread
G 43	M16	Thread
J L43	202 mm	

Medidas

H 7	8 mm	
h 1	45 mm	
R z	122 mm	



Datos técnicos

v_{max}	5 m/s	Maximum Speed
a_{max}	20 m/s ²	Maximum Acceleration
m_{LAW}	9,1 kg	Mass of Carriage
C_I	16.100 N	Load direction I: compressive load
C_{0I}	18.400 N	Load direction I: compressive load
C_{II}	9.760 N	Load direction II: tensile load
C_{0II}	12.500 N	Load direction II: tensile load
C_{III}	14.910 N	Load direction III: lateral load
C_{0III}	16.800 N	Load direction III: lateral load
M_{0x}	670 Nm	Max. permissible static moment per Carriage
M_{0y}	960 Nm	Max. permissible static moment per Carriage
M_{0z}	730 Nm	Max. permissible static moment per Carriage

Información adicional

KBO40-PP-AS Bearing

Rango de temperatura

min	0 °C	Minimum operating Temperatur
max	80 °C	Maximum operating Temperatur