**LTS30-180-TR20x8-M-1** [↗](#)

Mesa lineal

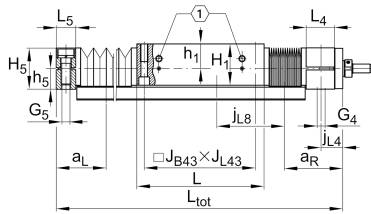
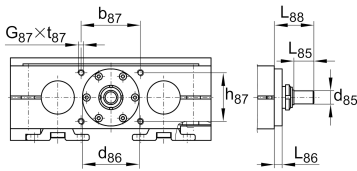
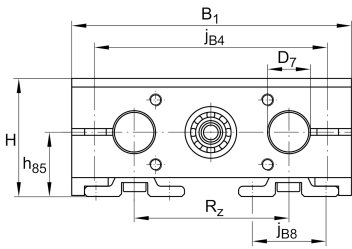
## Información técnica

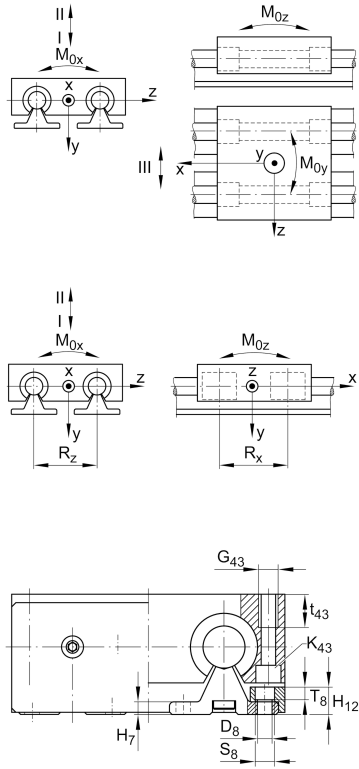
## Variante de su producto actual

Size code	30	
Drive type	TGT	Trapezoidal screw drive
Length of carriage	180	180 mm
Spindle diameter	20	20mm
Spindle pitch	08	8 mm
Spindle nut design	M	Cylinder nut
Bellow	1	Yes

## Medidas principales y datos de rendimiento

H	77 mm	Total Height
B <sub>1</sub>	180 mm	Total Width
L	180 mm	Length of carriage





**Medidas de montaje**

D 7	30 mm	Tolerance h7
D 8	9 mm	
H 1	60 mm	Height of carriage
H 12	16 mm	
J B43	158 mm	
j B8	51 mm	
j L8	150 mm	
K 43	M10	
L tot	2.900 mm	Maximum length
R x	98,6 mm	
S	8 mm	Safety distance
S	15 mm	
T 8	7,5 mm	
T 86	2,8 mm	Depth Fit
t 43	26 mm	Depth of Thread
t 87	15 mm	Depth of Thread
B B	21 mm	Length of Bellows Fastener
F BL	1,26 mm	Effective length factor of bellow
b 87	68 mm	Tolerance ±0,2
d 85	10 mm	Diameter drive shaft, Tolerance h7
D 86	32 mm	Tolerance H7
G 4	M12	Thread
G 5	M12	Thread
G 87	M6	Thread
G 43	M12	Thread
h 5	29 mm	
h 85	42 mm	
h 87	44 mm	Tolerance ±0,2

J L43 158 mm



### Medidas

H <sub>7</sub>	7 mm	
h <sub>1</sub>	35 mm	
L <sub>4</sub>	38 mm	Length of Shaft Support Block with Drive System
L <sub>5</sub>	25 mm	Length of Shaft Support Block without drive System
L <sub>88</sub>	36,5 mm	
R <sub>Z</sub>	96 mm	
H <sub>5</sub>	58 mm	Height of Shaft Support Blocks

### Datos técnicos

v <sub>max</sub>	0,2 m/s	Maximum Speed
a <sub>max</sub>	2,5 m/s <sup>2</sup>	Maximum Acceleration
d <sub>0</sub>	20 mm	Spindle Diameter
P	8 mm	Spindle Pitch
m <sub>LAW</sub>	4,3 kg	Mass of Carriage
I <sub>s</sub>	0,81 kg*cm <sup>2</sup>	Mass moment of inertia of threaded Spindle
C <sub>I</sub>	9.760 N	Load direction I: compressive load
C <sub>0I</sub>	12.000 N	Load direction I: compressive load
C <sub>II</sub>	5.930 N	Load direction II: tensile load
C <sub>0II</sub>	7.600 N	Load direction II: tensile load
C <sub>III</sub>	8.970 N	Load direction III: lateral load
C <sub>0III</sub>	10.700 N	Load direction III: lateral load
C <sub>0</sub>	2.550 N	Load capacity Spindle Nut stat
C <sub>0a</sub>	2.550 N	Load capacity fixed Spindle bearing stat
M <sub>0x</sub>	340 Nm	Max. permissible static moment per Carriage
M <sub>0y</sub>	450 Nm	Max. permissible static moment per Carriage
M <sub>0z</sub>	345 Nm	Max. permissible static moment per Carriage



### Información adicional

10 Nm	Max. permissible drive torque
2x7201-2RS	Rolling Bearings
0,81 kg*cm <sup>2</sup>	Mass moment of inertia of threaded Spindle
KBO30-PP-AS	Bearing

### Rango de temperatura

min	0 °C	Minimum operating Temperatur
max	80 °C	Maximum operating Temperatur