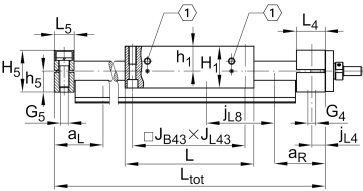
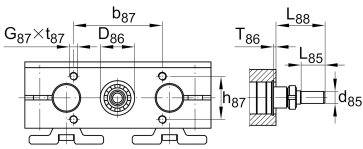
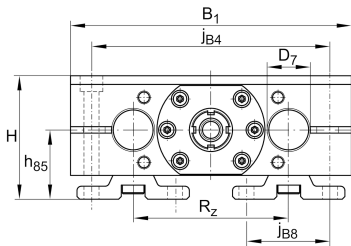
**LTS30-180-TR20x8-M-0** [↗](#)

Mesa lineal

Información técnica

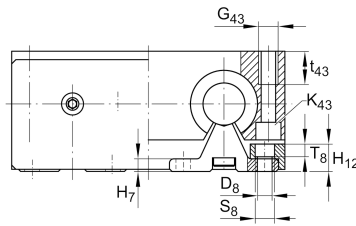
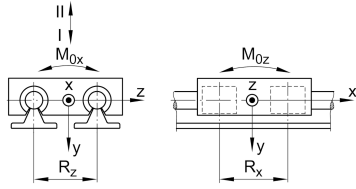
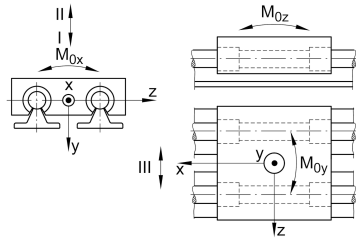


Variante de su producto actual

Size code	30	
Drive type	TGT	Trapezoidal screw drive
Length of carriage	180	180 mm
Spindle diameter	20	20mm
Spindle pitch	08	8 mm
Spindle nut design	M	Cylinder nut
Bellow	0	No

Medidas principales y datos de rendimiento

H	77 mm	Total Height
B ₁	180 mm	Total Width
L	180 mm	Length of carriage



Medidas de montaje

D 7	30 mm	Tolerance h7
D 8	9 mm	
H 1	60 mm	Height of carriage
H 12	16 mm	
J B43	158 mm	
j B8	51 mm	
j L8	150 mm	
K 43	M10	
L tot	2.900 mm	Maximum length
R x	98,6 mm	
S	8 mm	Safety distance
S	15 mm	
T 8	7,5 mm	
T 86	2,8 mm	Depth Fit
t 43	26 mm	Depth of Thread
t 87	15 mm	Depth of Thread
b 87	68 mm	Tolerance ±0,2
d 85	10 mm	Diameter drive shaft, Tolerance h7
D 86	32 mm	Tolerance H7
G 4	M12	Thread
G 5	M12	Thread
G 87	M6	Thread
G 43	M12	Thread
h 5	29 mm	
h 85	42 mm	
h 87	44 mm	Tolerance ±0,2
J L43	158 mm	
j B4	150 mm	
J L4	12,5 mm	



Medidas

H ₇	7 mm	
h ₁	35 mm	
L ₄	38 mm	Length of Shaft Support Block with Drive System
L ₅	25 mm	Length of Shaft Support Block without drive System
L ₈₈	36,5 mm	
L ₈₆	9,4 mm	
R _z	96 mm	
H ₅	58 mm	Height of Shaft Support Blocks

Datos técnicos

v _{max}	0,2 m/s	Maximum Speed
a _{max}	2,5 m/s ²	Maximum Acceleration
d ₀	20 mm	Spindle Diameter
P	8 mm	Spindle Pitch
m _{LAW}	4,3 kg	Mass of Carriage
I _s	0,81 kg*cm ²	Mass moment of inertia of threaded Spindle
C _I	9.760 N	Load direction I: compressive load
C _{0I}	12.000 N	Load direction I: compressive load
C _{II}	5.930 N	Load direction II: tensile load
C _{0II}	7.600 N	Load direction II: tensile load
C _{III}	8.970 N	Load direction III: lateral load
C _{0III}	10.700 N	Load direction III: lateral load
C ₀	2.550 N	Load capacity Spindle Nut stat
C _{0a}	2.550 N	Load capacity fixed Spindle bearing stat
M _{0x}	340 Nm	Max. permissible static moment per Carriage
M _{0y}	450 Nm	Max. permissible static moment per Carriage
M _{0z}	345 Nm	Max. permissible static moment per Carriage



Información adicional

10 Nm	Max. permissible drive torque
2x7201-2RS	Rolling Bearings
0,81 kg*cm ²	Mass moment of inertia of threaded Spindle
KBO30-PP-AS	Bearing

Rango de temperatura

min	0 °C	Minimum operating Temperatur
max	80 °C	Maximum operating Temperatur