



### LTS30-180-2010-M-1 [↗](#)

Mesa lineal

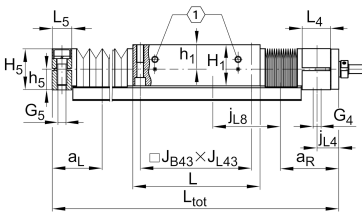
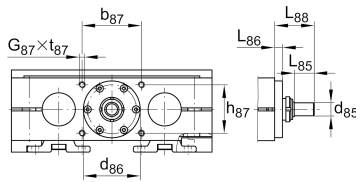
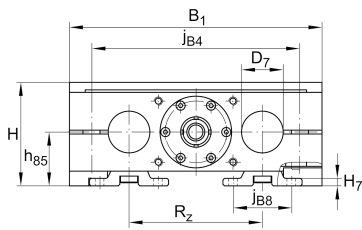
## Información técnica

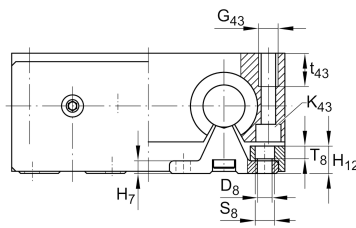
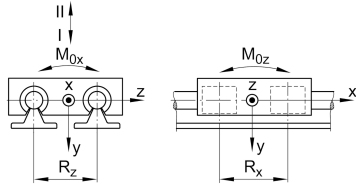
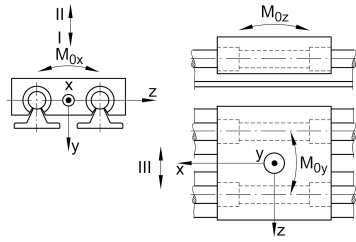
### Variante de su producto actual

Size code	30	
Drive type	KGT	Ball screw drive
Length of carriage	180	180 mm
Spindle diameter	20	20mm
Spindle pitch	10	10 mm
Spindle nut design	M	Cylinder nut
Bellow	1	Yes

### Medidas principales y datos de rendimiento

H	77 mm	Total Height
B <sub>1</sub>	180 mm	Total Width
L	180 mm	Length of carriage





**Medidas de montaje**

D 7	30 mm	Tolerance h7
D 8	9 mm	
H 1	60 mm	Height of carriage
H 12	16 mm	
J B43	158 mm	
j B8	51 mm	
j L8	150 mm	
K 43	M10	
L tot	5.400 mm	Maximum length
R x	98,6 mm	
S	10 mm	Safety distance
S	15 mm	
T 8	7,5 mm	
t 43	26 mm	Depth of Thread
t 87	15 mm	Depth of Thread
B B	21 mm	Length of Bellows Fastener
F BL	1,26 mm	Effective length factor of bellow
b 87	68 mm	Tolerance ±0,2
d 85	10 mm	Diameter drive shaft, Tolerance h7
d 86	60 mm	Tolerance g7
G 4	M12	Thread
G 5	M12	Thread
G 87	M6	Thread
G 43	M12	Thread
h 5	29 mm	
h 85	42 mm	
h 87	44 mm	Tolerance ±0,2
J L43	158 mm	
J B4	150 mm	



### Medidas

H <sub>7</sub>	7 mm	
h <sub>1</sub>	35 mm	
L <sub>4</sub>	38 mm	Length of Shaft Support Block with Drive System
L <sub>5</sub>	25 mm	Length of Shaft Support Block without drive System
L <sub>88</sub>	36,5 mm	
L <sub>86</sub>	9,4 mm	
R <sub>z</sub>	96 mm	
H <sub>5</sub>	58 mm	Height of Shaft Support Blocks



### Datos técnicos

$v_{max}$	0,5 m/s	Maximum Speed
$a_{max}$	20 m/s <sup>2</sup>	Maximum Acceleration
$d_0$	20 mm	Spindle Diameter
P	10 mm	Spindle Pitch
$m_{LAW}$	4,3 kg	Mass of Carriage
$I_s$	0,846 kg*cm <sup>2</sup>	Mass moment of inertia of threaded Spindle
$C_I$	9.760 N	Load direction I: compressive load
$C_{0I}$	12.000 N	Load direction I: compressive load
$C_{II}$	5.930 N	Load direction II: tensile load
$C_{0II}$	7.600 N	Load direction II: tensile load
$C_{III}$	8.970 N	Load direction III: lateral load
$C_{0III}$	10.700 N	Load direction III: lateral load
C	12.700 N	Load capacity Spindle Nut dyn
$C_0$	22.100 N	Load capacity Spindle Nut stat
$C_a$	17.900 N	Load capacity fixed Spindle bearing dyn
$C_{0a}$	28.000 N	Load capacity fixed Spindle bearing stat
$M_{0x}$	340 Nm	Max. permissible static moment per Carriage
$M_{0y}$	450 Nm	Max. permissible static moment per Carriage
$M_{0z}$	345 Nm	Max. permissible static moment per Carriage

### Información adicional

	17 Nm	Max. permissible drive torque
	ZKLN1545.2RS-PE	Rolling Bearings
	0,05 mm	Repeat Accuracy ±
	0,846 kg*cm <sup>2</sup>	Mass moment of inertia of threaded Spindle
	KBO30-PP-AS	Bearing



### Rango de temperatura

---

min	0 °C	Minimum operating Temperatur
max	80 °C	Maximum operating Temperatur