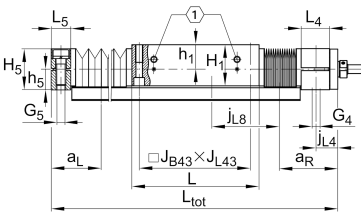
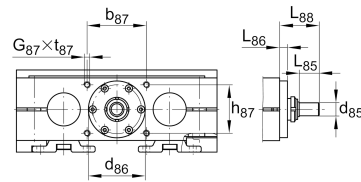
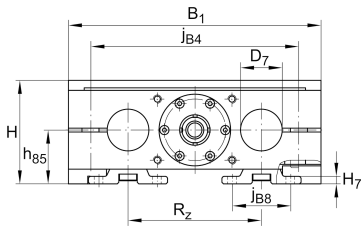


**LTS30-180-2005-M-1** [↗](#)

Mesa lineal

## Información técnica

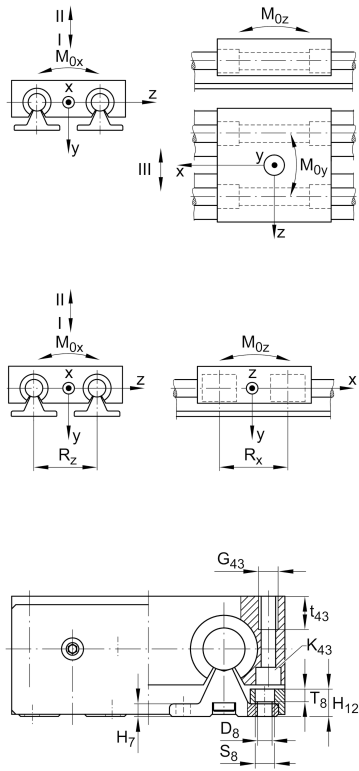


## Variante de su producto actual

Size code	30	
Drive type	KGT	Ball screw drive
Length of carriage	180	180 mm
Spindle diameter	20	20mm
Spindle pitch	05	5 mm
Spindle nut design	M	Cylinder nut
Bellow	1	Yes

## Medidas principales y datos de rendimiento

H	77 mm	Total Height
B <sub>1</sub>	180 mm	Total Width
L	180 mm	Length of carriage



**Medidas de montaje**

D 7	30 mm	Tolerance h7
D 8	9 mm	
H 1	60 mm	Height of carriage
H 12	16 mm	
J B43	158 mm	
j B8	51 mm	
j L8	150 mm	
K 43	M10	
L tot	5.400 mm	Maximum length
R x	98,6 mm	
S	5 mm	Safety distance
S	15 mm	
T 8	7,5 mm	
t 43	26 mm	Depth of Thread
t 87	15 mm	Depth of Thread
B B	21 mm	Length of Bellows Fastener
F BL	1,26 mm	Effective length factor of bellow
b 87	68 mm	Tolerance ±0,2
d 85	10 mm	Diameter drive shaft, Tolerance h7
d 86	60 mm	Tolerance g7
G 4	M12	Thread
G 5	M12	Thread
G 87	M6	Thread
G 43	M12	Thread
h 5	29 mm	
h 85	42 mm	
h 87	44 mm	Tolerance ±0,2
J L43	158 mm	
J B4	150 mm	



### Medidas

H 7	7 mm	
h 1	35 mm	
L 4	38 mm	Length of Shaft Support Block with Drive System
L 5	25 mm	Length of Shaft Support Block without drive System
L 88	36,5 mm	
L 86	9,4 mm	
R z	96 mm	
H 5	58 mm	Height of Shaft Support Blocks



### Datos técnicos

$v_{max}$	0,29 m/s	Maximum Speed
$a_{max}$	20 m/s <sup>2</sup>	Maximum Acceleration
$d_0$	20 mm	Spindle Diameter
P	5 mm	Spindle Pitch
$m_{LAW}$	4,3 kg	Mass of Carriage
$I_s$	0,846 kg*cm <sup>2</sup>	Mass moment of inertia of threaded Spindle
$C_I$	9.760 N	Load direction I: compressive load
$C_{0I}$	12.000 N	Load direction I: compressive load
$C_{II}$	5.930 N	Load direction II: tensile load
$C_{0II}$	7.600 N	Load direction II: tensile load
$C_{III}$	8.970 N	Load direction III: lateral load
$C_{0III}$	10.700 N	Load direction III: lateral load
C	10.500 N	Load capacity Spindle Nut dyn
$C_0$	16.600 N	Load capacity Spindle Nut stat
$C_a$	17.900 N	Load capacity fixed Spindle bearing dyn
$C_{0a}$	28.000 N	Load capacity fixed Spindle bearing stat
$M_{0x}$	340 Nm	Max. permissible static moment per Carriage
$M_{0y}$	450 Nm	Max. permissible static moment per Carriage
$M_{0z}$	345 Nm	Max. permissible static moment per Carriage

### Información adicional

	17 Nm	Max. permissible drive torque
	ZKLN1545.2RS-PE	Rolling Bearings
	0,05 mm	Repeat Accuracy ±
	0,846 kg*cm <sup>2</sup>	Mass moment of inertia of threaded Spindle
	KBO30-PP-AS	Bearing



### Rango de temperatura

---

min	0 °C	Minimum operating Temperatur
-----	------	------------------------------

max	80 °C	Maximum operating Temperatur
-----	-------	------------------------------