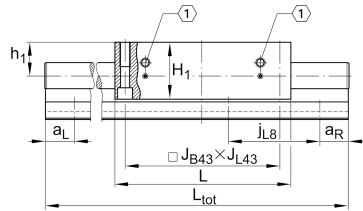
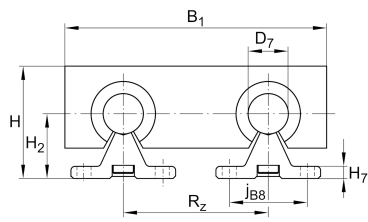




### LTS30-180-0 [↗](#)

Mesa lineal

## Información técnica

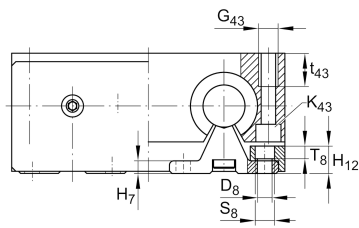
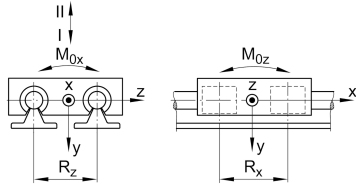
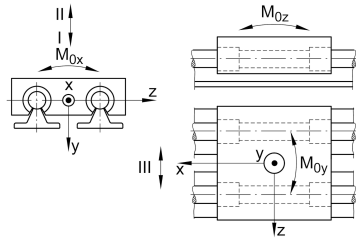


### Variante de su producto actual

Size code	30	
Drive type	OA	Without drive
Length of carriage	180	180 mm
Bellow	0	No

### Medidas principales y datos de rendimiento

H	77 mm	Total Height
B <sub>1</sub>	180 mm	Total Width
L	180 mm	Length of carriage



### Medidas de montaje

D 7	30 mm	Tolerance h7
D 8	9 mm	
H 1	60 mm	Height of carriage
H 12	16 mm	
H 2	42 mm	
J B43	158 mm	
j B8	51 mm	
j L8	150 mm	
K 43	M10	
L 20	4,4 mm	
L 21	4 mm	
L tot	6.000 mm	Maximum length
R x	98,6 mm	
S	15 mm	
T 8	7,5 mm	
t 43	26 mm	Depth of Thread
G 43	M12	Thread
J L43	158 mm	

### Medidas

H 7	7 mm	
h 1	35 mm	
R z	96 mm	



### Datos técnicos

$v_{max}$	5 m/s	Maximum Speed
$a_{max}$	20 m/s <sup>2</sup>	Maximum Acceleration
$m_{LAW}$	4,4 kg	Mass of Carriage
$C_{I}$	9.760 N	Load direction I: compressive load
$C_{0I}$	12.000 N	Load direction I: compressive load
$C_{II}$	5.930 N	Load direction II: tensile load
$C_{0II}$	7.600 N	Load direction II: tensile load
$C_{III}$	8.970 N	Load direction III: lateral load
$C_{0III}$	10.700 N	Load direction III: lateral load
$M_{0x}$	340 Nm	Max. permissible static moment per Carriage
$M_{0y}$	450 Nm	Max. permissible static moment per Carriage
$M_{0z}$	345 Nm	Max. permissible static moment per Carriage

### Información adicional

KBO30-PP-AS Bearing

### Rango de temperatura

min	0 °C	Minimum operating Temperatur
max	80 °C	Maximum operating Temperatur