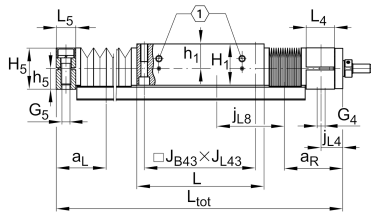
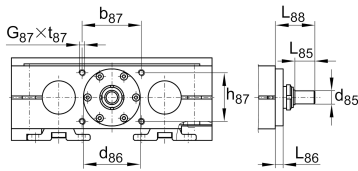
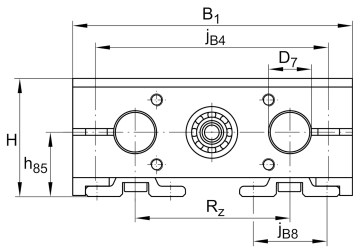
**LTS25-160-TR16x4-M-1** [↗](#)

Mesa lineal

## Información técnica

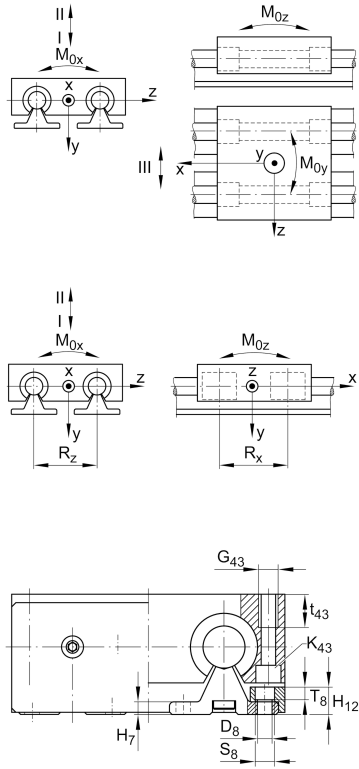


## Variante de su producto actual

Size code	25	
Drive type	TGT	Trapezoidal screw drive
Length of carriage	160	160 mm
Spindle diameter	16	16mm
Spindle pitch	04	4 mm
Spindle nut design	M	Cylinder nut
Bellow	1	Yes

## Medidas principales y datos de rendimiento

H	66 mm	Total Height
B 1	160 mm	Total Width
L	160 mm	Length of carriage



**Medidas de montaje**

D 7	25 mm	Tolerance h7
D 8	6,6 mm	
H 1	51 mm	Height of carriage
H 12	14 mm	
J B43	140 mm	
j B8	42 mm	
j L8	120 mm	
K 43	M8	
L tot	2.900 mm	Maximum length
R x	88,6 mm	
S	4 mm	Safety distance
S	11 mm	
T 8	6,1 mm	
T 86	3,3 mm	Depth Fit
t 43	22 mm	Depth of Thread
t 87	15 mm	Depth of Thread
B B	21 mm	Length of Bellows Fastener
F BL	1,34 mm	Effective length factor of bellow
b 87	64 mm	Tolerance ±0,2
d 85	9 mm	Diameter drive shaft, Tolerance h7
D 86	30 mm	Tolerance H7
G 4	M12	Thread
G 5	M12	Thread
G 87	M6	Thread
G 43	M10	Thread
h 5	26 mm	
h 85	36 mm	
h 87	38 mm	Tolerance ±0,2

J L43 140 mm



### Medidas

H <sub>7</sub>	6 mm	
h <sub>1</sub>	30 mm	
L <sub>4</sub>	33 mm	Length of Shaft Support Block with Drive System
L <sub>5</sub>	25 mm	Length of Shaft Support Block without drive System
L <sub>88</sub>	34,5 mm	
R <sub>z</sub>	88 mm	
H <sub>5</sub>	52 mm	Height of Shaft Support Blocks

### Datos técnicos

v <sub>max</sub>	0,1 m/s	Maximum Speed
a <sub>max</sub>	2,5 m/s <sup>2</sup>	Maximum Acceleration
d <sub>0</sub>	16 mm	Spindle Diameter
P	4 mm	Spindle Pitch
m <sub>LAW</sub>	2,9 kg	Mass of Carriage
I <sub>s</sub>	0,3 kg*cm <sup>2</sup>	Mass moment of inertia of threaded Spindle
C <sub>I</sub>	7.520 N	Load direction I: compressive load
C <sub>0I</sub>	9.200 N	Load direction I: compressive load
C <sub>II</sub>	4.550 N	Load direction II: tensile load
C <sub>0II</sub>	6.000 N	Load direction II: tensile load
C <sub>III</sub>	6.930 N	Load direction III: lateral load
C <sub>0III</sub>	8.200 N	Load direction III: lateral load
C <sub>0</sub>	2.250 N	Load capacity Spindle Nut stat
C <sub>0a</sub>	2.250 N	Load capacity fixed Spindle bearing stat
M <sub>0x</sub>	240 Nm	Max. permissible static moment per Carriage
M <sub>0y</sub>	312 Nm	Max. permissible static moment per Carriage
M <sub>0z</sub>	240 Nm	Max. permissible static moment per Carriage



### Información adicional

3 Nm	Max. permissible drive torque
2x7200-2RS	Rolling Bearings
0,3 kg*cm <sup>2</sup>	Mass moment of inertia of threaded Spindle
KBO25-PP-AS	Bearing

### Rango de temperatura

min	0 °C	Minimum operating Temperatur
max	80 °C	Maximum operating Temperatur