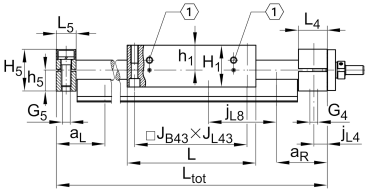
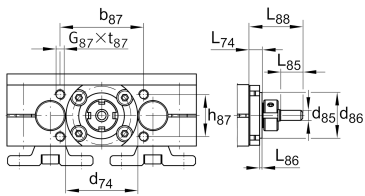
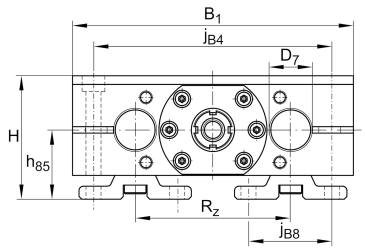


**LTS25-160-1610-MM-0** [↗](#)

Mesa lineal

## Información técnica

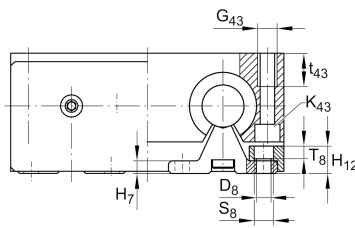
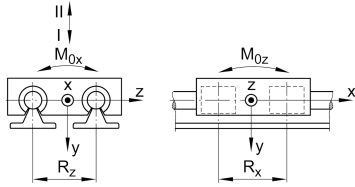


## Variante de su producto actual

Size code	25	
Drive type	KGT	Ball screw drive
Length of carriage	160	160 mm
Spindle diameter	16	16mm
Spindle pitch	10	10 mm
Spindle nut design	MM	Double cylinder nut
Bellow	0	No

## Medidas principales y datos de rendimiento

H	66 mm	Total Height
B 1	160 mm	Total Width
L	160 mm	Length of carriage



**Medidas de montaje**

D 7	25 mm	Tolerance h7
D 8	6,6 mm	
H 1	51 mm	Height of carriage
H 12	14 mm	
J B43	140 mm	
j B8	42 mm	
j L8	120 mm	
K 43	M8	
L tot	5,850 mm	Maximum length
R x	88,6 mm	
S	10 mm	Safety distance
S	11 mm	
T 8	6,1 mm	
t 43	22 mm	Depth of Thread
t 87	15 mm	Depth of Thread
b 87	64 mm	Tolerance ±0,2
d 85	9 mm	Diameter drive shaft, Tolerance h7
d 86	52 mm	Tolerance g7
G 4	M12	Thread
G 5	M12	Thread
G 87	M6	Thread
G 43	M10	Thread
h 5	26 mm	
h 85	36 mm	
h 87	38 mm	Tolerance ±0,2
J L43	140 mm	
j B4	132 mm	
J L4	12,5 mm	



### Medidas

H 7	6 mm	
h 1	30 mm	
L 4	33 mm	Length of Shaft Support Block with Drive System
L 5	25 mm	Length of Shaft Support Block without drive System
L 88	34,5 mm	
L 86	7 mm	
R z	88 mm	
H 5	52 mm	Height of Shaft Support Blocks



### Datos técnicos

$v_{max}$	0,75 m/s	Maximum Speed
$a_{max}$	10 m/s <sup>2</sup>	Maximum Acceleration
$d_0$	16 mm	Spindle Diameter
P	10 mm	Spindle Pitch
$m_{LAW}$	2,9 kg	Mass of Carriage
$I_s$	0,321 kg*cm <sup>2</sup>	Mass moment of inertia of threaded Spindle
$C_I$	7.520 N	Load direction I: compressive load
$C_{0I}$	9.200 N	Load direction I: compressive load
$C_{II}$	4.550 N	Load direction II: tensile load
$C_{0II}$	6.000 N	Load direction II: tensile load
$C_{III}$	6.930 N	Load direction III: lateral load
$C_{0III}$	8.200 N	Load direction III: lateral load
C	15.400 N	Load capacity Spindle Nut dyn
$C_0$	26.500 N	Load capacity Spindle Nut stat
$C_a$	13.400 N	Load capacity fixed Spindle bearing dyn
$C_{0a}$	18.800 N	Load capacity fixed Spindle bearing stat
$M_{0x}$	240 Nm	Max. permissible static moment per Carriage
$M_{0y}$	312 Nm	Max. permissible static moment per Carriage
$M_{0z}$	240 Nm	Max. permissible static moment per Carriage

### Información adicional

	6 Nm	Max. permissible drive torque
	ZKLN1034.2RS-PE	Rolling Bearings
	0,025 mm	Repeat Accuracy ±
	0,321 kg*cm <sup>2</sup>	Mass moment of inertia of threaded Spindle
	KBO25-PP-AS	Bearing



### Rango de temperatura

---

min	0 °C	Minimum operating Temperatur
max	80 °C	Maximum operating Temperatur