**LTS25-160-1** [↗](#)

Mesa lineal

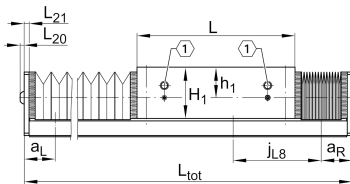
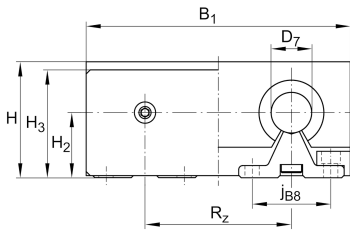
Información técnica

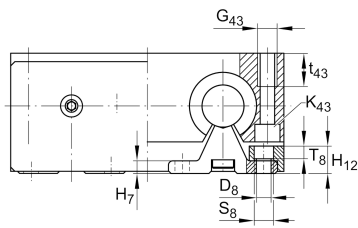
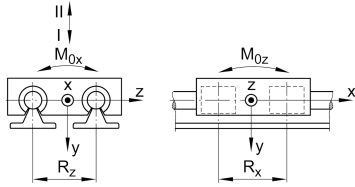
Variante de su producto actual

Size code	25	
Drive type	OA	Without drive
Length of carriage	160	160 mm
Bellow	1	Yes

Medidas principales y datos de rendimiento

H	66 mm	Total Height
B ₁	160 mm	Total Width
L	160 mm	Length of carriage





Medidas de montaje

D 7	25 mm	Tolerance h7
D 8	6,6 mm	
H 1	51 mm	Height of carriage
H 12	14 mm	
H 2	36 mm	
H 3	62 mm	
J B43	140 mm	
j B8	42 mm	
j L8	120 mm	
K 43	M8	
L 20	3,3 mm	
L 21	4 mm	
L tot	4,400 mm	Maximum length
R x	88,6 mm	
S	11 mm	
T 8	6,1 mm	
t 43	22 mm	Depth of Thread
B B	29 mm	Length of Bellows Fastener
F BL	1,34 mm	Effective length factor of bellow
G 43	M10	Thread
J L43	140 mm	

Medidas

H 7	6 mm
h 1	30 mm
R z	88 mm



Datos técnicos

v_{max}	5 m/s	Maximum Speed
a_{max}	20 m/s ²	Maximum Acceleration
m_{LAW}	3 kg	Mass of Carriage
C_{I}	7.520 N	Load direction I: compressive load
C_{0I}	9.200 N	Load direction I: compressive load
C_{II}	4.550 N	Load direction II: tensile load
C_{0II}	6.000 N	Load direction II: tensile load
C_{III}	6.930 N	Load direction III: lateral load
C_{0III}	8.200 N	Load direction III: lateral load
M_{0x}	240 Nm	Max. permissible static moment per Carriage
M_{0y}	312 Nm	Max. permissible static moment per Carriage
M_{0z}	240 Nm	Max. permissible static moment per Carriage

Información adicional

KBO25-PP-AS Bearing

Rango de temperatura

min	0 °C	Minimum operating Temperatur
max	80 °C	Maximum operating Temperatur