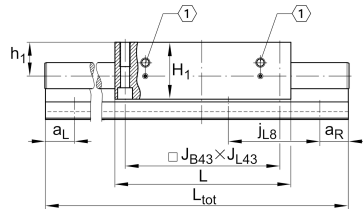
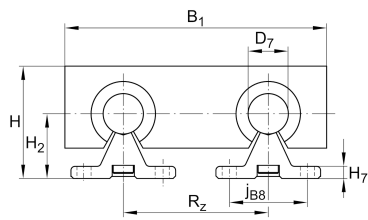




### LTS25-160-0 [↗](#)

Mesa lineal

## Información técnica

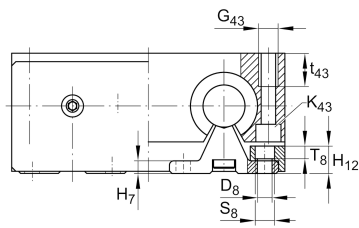
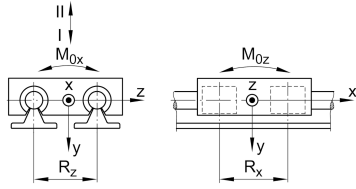
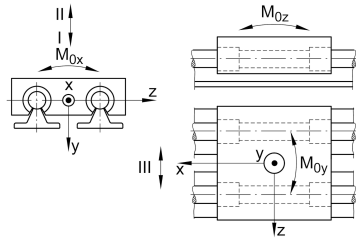


### Variante de su producto actual

Size code	25	
Drive type	OA	Without drive
Length of carriage	160	160 mm
Bellow	0	No

### Medidas principales y datos de rendimiento

H	66 mm	Total Height
B <sub>1</sub>	160 mm	Total Width
L	160 mm	Length of carriage



### Medidas de montaje

D 7	25 mm	Tolerance h7
D 8	6,6 mm	
H 1	51 mm	Height of carriage
H 12	14 mm	
H 2	36 mm	
J B43	140 mm	
j B8	42 mm	
j L8	120 mm	
K 43	M8	
L 20	3,3 mm	
L 21	4 mm	
L tot	6.000 mm	Maximum length
R x	88,6 mm	
S	11 mm	
T 8	6,1 mm	
t 43	22 mm	Depth of Thread
G 43	M10	Thread
J L43	140 mm	

### Medidas

H 7	6 mm
h 1	30 mm
R z	88 mm



### Datos técnicos

$v_{max}$	5 m/s	Maximum Speed
$a_{max}$	20 m/s <sup>2</sup>	Maximum Acceleration
$m_{LAW}$	3 kg	Mass of Carriage
$C_{I}$	7.520 N	Load direction I: compressive load
$C_{0I}$	9.200 N	Load direction I: compressive load
$C_{II}$	4.550 N	Load direction II: tensile load
$C_{0II}$	6.000 N	Load direction II: tensile load
$C_{III}$	6.930 N	Load direction III: lateral load
$C_{0III}$	8.200 N	Load direction III: lateral load
$M_{0x}$	240 Nm	Max. permissible static moment per Carriage
$M_{0y}$	312 Nm	Max. permissible static moment per Carriage
$M_{0z}$	240 Nm	Max. permissible static moment per Carriage

### Información adicional

KBO25-PP-AS      Bearing

### Rango de temperatura

min	0 °C	Minimum operating Temperatur
max	80 °C	Maximum operating Temperatur