**LTS20-130-TR16x4-M-1** [↗](#)

Mesa lineal

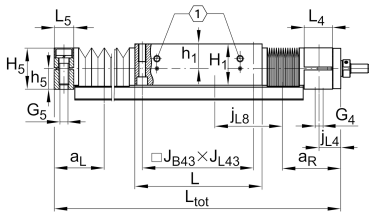
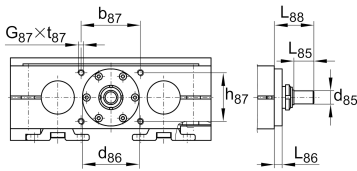
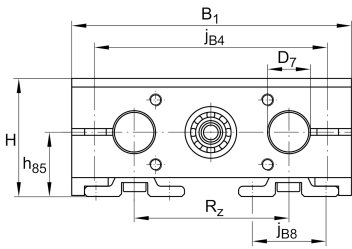
## Información técnica

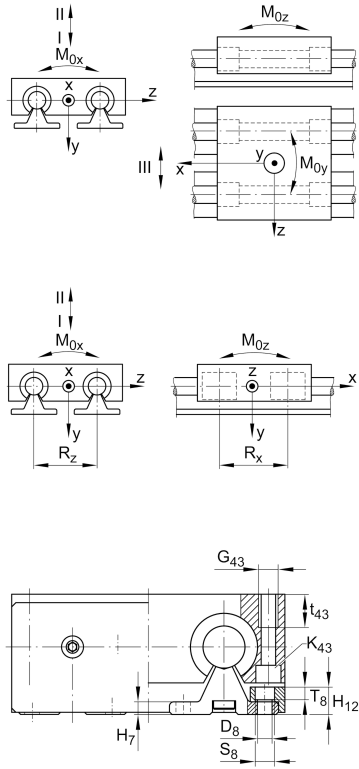
## Variante de su producto actual

|                    |     |                         |
|--------------------|-----|-------------------------|
| Size code          | 20  |                         |
| Drive type         | TGT | Trapezoidal screw drive |
| Length of carriage | 130 | 130 mm                  |
| Spindle diameter   | 16  | 16mm                    |
| Spindle pitch      | 04  | 4 mm                    |
| Spindle nut design | M   | Cylinder nut            |
| Bellow             | 1   | Yes                     |

## Medidas principales y datos de rendimiento

|                |        |                    |
|----------------|--------|--------------------|
| H              | 57 mm  | Total Height       |
| B <sub>1</sub> | 130 mm | Total Width        |
| L              | 130 mm | Length of carriage |





**Medidas de montaje**

|       |          |                                    |
|-------|----------|------------------------------------|
| D 7   | 20 mm    | Tolerance h7                       |
| D 8   | 6,6 mm   |                                    |
| H 1   | 42 mm    | Height of carriage                 |
| H 12  | 13 mm    |                                    |
| J B43 | 115 mm   |                                    |
| j B8  | 37 mm    |                                    |
| j L8  | 100 mm   |                                    |
| K 43  | M6       |                                    |
| L tot | 2.900 mm | Maximum length                     |
| R x   | 74,6 mm  |                                    |
| S     | 4 mm     | Safety distance                    |
| S     | 11 mm    |                                    |
| T 8   | 6,1 mm   |                                    |
| T 86  | 2,8 mm   | Depth Fit                          |
| t 43  | 18 mm    | Depth of Thread                    |
| t 87  | 15 mm    | Depth of Thread                    |
| B B   | 21 mm    | Length of Bellows Fastener         |
| F BL  | 1,43 mm  | Effective length factor of bellow  |
| b 87  | 62 mm    | Tolerance ±0,2                     |
| d 85  | 9 mm     | Diameter drive shaft, Tolerance h7 |
| D 86  | 30 mm    | Tolerance H7                       |
| G 4   | M10      | Thread                             |
| G 5   | M10      | Thread                             |
| G 87  | M6       | Thread                             |
| G 43  | M8       | Thread                             |
| h 5   | 21 mm    |                                    |
| h 85  | 32 mm    |                                    |
| h 87  | 30 mm    | Tolerance ±0,2                     |

J L43 115 mm



### Medidas

|                 |       |  |
|-----------------|-------|--|
| H <sub>7</sub>  | 6 mm  |  |
| h <sub>1</sub>  | 25 mm |  |
| L <sub>4</sub>  | 29 mm | Length of Shaft Support Block with Drive System    |
| L <sub>5</sub>  | 20 mm | Length of Shaft Support Block without drive System |
| L <sub>88</sub> | 37 mm |  |
| R <sub>Z</sub>  | 72 mm |  |
| H <sub>5</sub>  | 42 mm | Height of Shaft Support Blocks                     |

### Datos técnicos

|                   |                        |   |
|-------------------|------------------------|---|
| v <sub>max</sub>  | 0,1 m/s                | Maximum Speed                               |
| a <sub>max</sub>  | 2,5 m/s <sup>2</sup>   | Maximum Acceleration                        |
| d <sub>0</sub>    | 16 mm                  | Spindle Diameter                            |
| P                 | 4 mm                   | Spindle Pitch                               |
| m <sub>LAW</sub>  | 1,6 kg                 | Mass of Carriage                            |
| I <sub>s</sub>    | 0,3 kg*cm <sup>2</sup> | Mass moment of inertia of threaded Spindle  |
| C <sub>I</sub>    | 4.220 N                | Load direction I: compressive load          |
| C <sub>0I</sub>   | 5.120 N                | Load direction I: compressive load          |
| C <sub>II</sub>   | 2.500 N                | Load direction II: tensile load             |
| C <sub>0II</sub>  | 3.280 N                | Load direction II: tensile load             |
| C <sub>III</sub>  | 3.880 N                | Load direction III: lateral load            |
| C <sub>0III</sub> | 4.600 N                | Load direction III: lateral load            |
| C <sub>0</sub>    | 2.250 N                | Load capacity Spindle Nut stat              |
| C <sub>0a</sub>   | 2.250 N                | Load capacity fixed Spindle bearing stat    |
| M <sub>0x</sub>   | 109 Nm                 | Max. permissible static moment per Carriage |
| M <sub>0y</sub>   | 130 Nm                 | Max. permissible static moment per Carriage |
| M <sub>0z</sub>   | 100 Nm                 | Max. permissible static moment per Carriage |



### Información adicional

|                        |  |
|------------------------|--|
| 3 Nm                   | Max. permissible drive torque              |
| 2x7200-2RS             | Rolling Bearings                           |
| 0,3 kg*cm <sup>2</sup> | Mass moment of inertia of threaded Spindle |
| KBO20-PP-AS            | Bearing                                    |

### Rango de temperatura

|     |       |                              |
|-----|-------|------------------------------|
| min | 0 °C  | Minimum operating Temperatur |
| max | 80 °C | Maximum operating Temperatur |