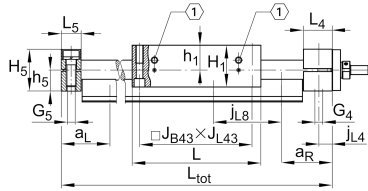
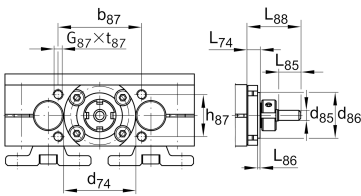
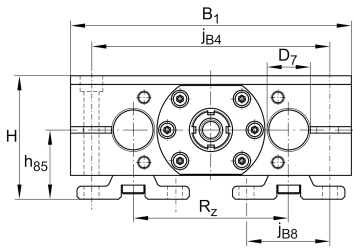


**LTS20-130-1610-M-0**

Mesa lineal

## Información técnica

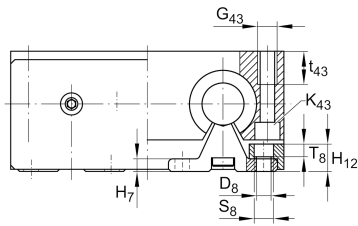
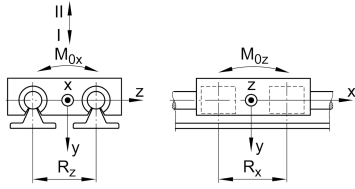
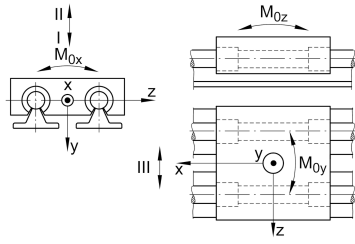


## Variante de su producto actual

Size code	20	
Drive type	KGT	Ball screw drive
Length of carriage	130	130 mm
Spindle diameter	16	16mm
Spindle pitch	10	10 mm
Spindle nut design	M	Cylinder nut
Bellow	0	No

## Medidas principales y datos de rendimiento

H	57 mm	Total Height
B 1	130 mm	Total Width
L	130 mm	Length of carriage



**Medidas de montaje**

D 7	20 mm	Tolerance h7
D 8	6,6 mm	
H 1	42 mm	Height of carriage
H 12	13 mm	
J B43	115 mm	
j B8	37 mm	
j L8	100 mm	
K 43	M6	
L tot	5.850 mm	Maximum length
R x	74,6 mm	
S	10 mm	Safety distance
S	11 mm	
T 8	6,1 mm	
t 43	18 mm	Depth of Thread
t 87	15 mm	Depth of Thread
b 87	62 mm	Tolerance ±0,2
d 85	9 mm	Diameter drive shaft, Tolerance h7
d 86	50 mm	Tolerance g7
G 4	M10	Thread
G 5	M10	Thread
G 87	M6	Thread
G 43	M8	Thread
h 5	21 mm	
h 85	32 mm	
h 87	30 mm	Tolerance ±0,2
J L43	115 mm	
j B4	108 mm	
J L4	10 mm	



### Medidas

H 7	6 mm	
h 1	25 mm	
L 4	29 mm	Length of Shaft Support Block with Drive System
L 5	20 mm	Length of Shaft Support Block without drive System
L 88	37 mm	
L 86	8 mm	
R z	72 mm	
H 5	42 mm	Height of Shaft Support Blocks



### Datos técnicos

$v_{max}$	0,75 m/s	Maximum Speed
$a_{max}$	20 m/s <sup>2</sup>	Maximum Acceleration
$d_0$	16 mm	Spindle Diameter
P	10 mm	Spindle Pitch
$m_{LAW}$	1,6 kg	Mass of Carriage
$I_s$	0,321 kg*cm <sup>2</sup>	Mass moment of inertia of threaded Spindle
$C_I$	4.220 N	Load direction I: compressive load
$C_{0I}$	5.120 N	Load direction I: compressive load
$C_{II}$	2.500 N	Load direction II: tensile load
$C_{0II}$	3.280 N	Load direction II: tensile load
$C_{III}$	3.880 N	Load direction III: lateral load
$C_{0III}$	4.600 N	Load direction III: lateral load
C	15.400 N	Load capacity Spindle Nut dyn
$C_0$	26.500 N	Load capacity Spindle Nut stat
$C_a$	13.400 N	Load capacity fixed Spindle bearing dyn
$C_{0a}$	18.800 N	Load capacity fixed Spindle bearing stat
$M_{0x}$	109 Nm	Max. permissible static moment per Carriage
$M_{0y}$	130 Nm	Max. permissible static moment per Carriage
$M_{0z}$	100 Nm	Max. permissible static moment per Carriage

### Información adicional

6 Nm	Max. permissible drive torque
ZKLN1034.2RS-PE	Rolling Bearings
0,05 mm	Repeat Accuracy ±
0,321 kg*cm <sup>2</sup>	Mass moment of inertia of threaded Spindle
KBO20-PP-AS	Bearing



### Rango de temperatura

---

min	0 °C	Minimum operating Temperatur
max	80 °C	Maximum operating Temperatur