**LTS20-130-1605-MM-1** [↗](#)

Mesa lineal

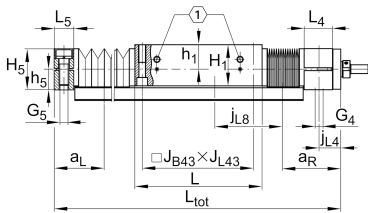
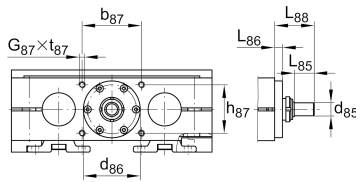
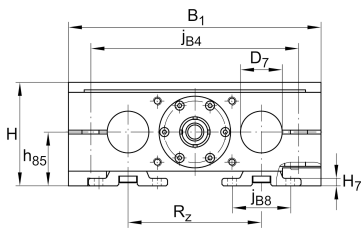
## Información técnica

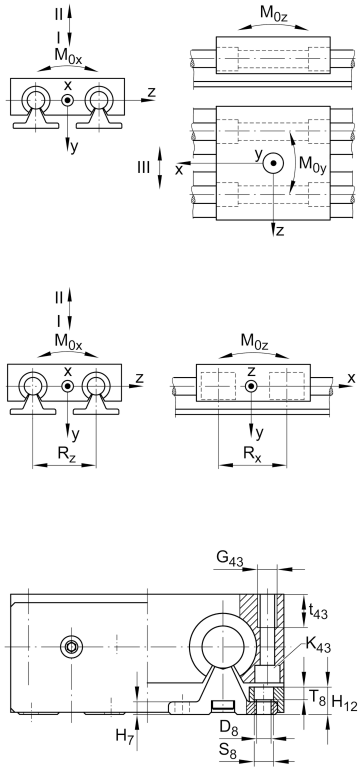
## Variante de su producto actual

Size code	20	
Drive type	KGT	Ball screw drive
Length of carriage	130	130 mm
Spindle diameter	16	16mm
Spindle pitch	05	5 mm
Spindle nut design	MM	Double cylinder nut
Bellow	1	Yes

## Medidas principales y datos de rendimiento

H	57 mm	Total Height
B <sub>1</sub>	130 mm	Total Width
L	130 mm	Length of carriage





**Medidas de montaje**

D 7	20 mm	Tolerance h7
D 8	6,6 mm	
H 1	42 mm	Height of carriage
H 12	13 mm	
J B43	115 mm	
j B8	37 mm	
j L8	100 mm	
K 43	M6	
L tot	3.800 mm	Maximum length
R x	74,6 mm	
S	5 mm	Safety distance
S	11 mm	
T 8	6,1 mm	
t 43	18 mm	Depth of Thread
t 87	15 mm	Depth of Thread
B B	21 mm	Length of Bellows Fastener
F BL	1,43 mm	Effective length factor of bellow
b 87	62 mm	Tolerance ±0,2
d 85	9 mm	Diameter drive shaft, Tolerance h7
d 86	50 mm	Tolerance g7
G 4	M10	Thread
G 5	M10	Thread
G 87	M6	Thread
G 43	M8	Thread
h 5	21 mm	
h 85	32 mm	
h 87	30 mm	Tolerance ±0,2
J L43	115 mm	
J B4	108 mm	



### Medidas

H <sub>7</sub>	6 mm	
h <sub>1</sub>	25 mm	
L <sub>4</sub>	29 mm	Length of Shaft Support Block with Drive System
L <sub>5</sub>	20 mm	Length of Shaft Support Block without drive System
L <sub>88</sub>	37 mm	
L <sub>86</sub>	8 mm	
R <sub>z</sub>	72 mm	
H <sub>5</sub>	42 mm	Height of Shaft Support Blocks



### Datos técnicos

$v_{max}$	0,25 m/s	Maximum Speed
$a_{max}$	10 m/s <sup>2</sup>	Maximum Acceleration
$d_0$	16 mm	Spindle Diameter
P	5 mm	Spindle Pitch
$m_{LAW}$	1,6 kg	Mass of Carriage
$I_s$	0,313 kg*cm <sup>2</sup>	Mass moment of inertia of threaded Spindle
$C_I$	4.220 N	Load direction I: compressive load
$C_{0I}$	5.120 N	Load direction I: compressive load
$C_{II}$	2.500 N	Load direction II: tensile load
$C_{0II}$	3.280 N	Load direction II: tensile load
$C_{III}$	3.880 N	Load direction III: lateral load
$C_{0III}$	4.600 N	Load direction III: lateral load
C	9.300 N	Load capacity Spindle Nut dyn
$C_0$	13.100 N	Load capacity Spindle Nut stat
$C_a$	13.400 N	Load capacity fixed Spindle bearing dyn
$C_{0a}$	18.800 N	Load capacity fixed Spindle bearing stat
$M_{0x}$	109 Nm	Max. permissible static moment per Carriage
$M_{0y}$	130 Nm	Max. permissible static moment per Carriage
$M_{0z}$	100 Nm	Max. permissible static moment per Carriage

### Información adicional

	6 Nm	Max. permissible drive torque
	ZKLN1034.2RS-PE	Rolling Bearings
	0,025 mm	Repeat Accuracy ±
	0,313 kg*cm <sup>2</sup>	Mass moment of inertia of threaded Spindle
	KBO20-PP-AS	Bearing



### Rango de temperatura

---

min	0 °C	Minimum operating Temperatur
max	80 °C	Maximum operating Temperatur