

**LTS20-130-1605-MM-0** [↗](#)

Mesa lineal

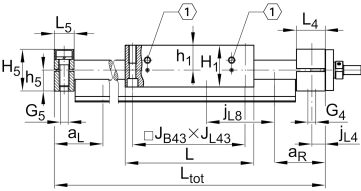
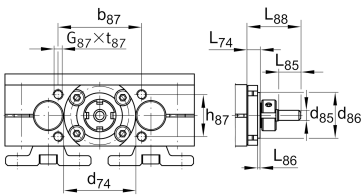
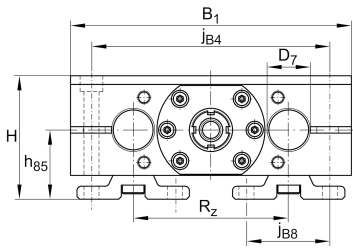
Información técnica

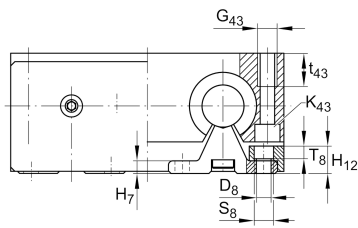
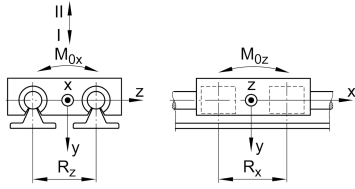
Variante de su producto actual

Size code	20	
Drive type	KGT	Ball screw drive
Length of carriage	130	130 mm
Spindle diameter	16	16mm
Spindle pitch	05	5 mm
Spindle nut design	MM	Double cylinder nut
Bellow	0	No

Medidas principales y datos de rendimiento

H	57 mm	Total Height
B ₁	130 mm	Total Width
L	130 mm	Length of carriage





Medidas de montaje

D 7	20 mm	Tolerance h7
D 8	6,6 mm	
H 1	42 mm	Height of carriage
H 12	13 mm	
J B43	115 mm	
j B8	37 mm	
j L8	100 mm	
K 43	M6	
L tot	5,850 mm	Maximum length
R x	74,6 mm	
S	5 mm	Safety distance
S	11 mm	
T 8	6,1 mm	
t 43	18 mm	Depth of Thread
t 87	15 mm	Depth of Thread
b 87	62 mm	Tolerance ±0,2
d 85	9 mm	Diameter drive shaft, Tolerance h7
d 86	50 mm	Tolerance g7
G 4	M10	Thread
G 5	M10	Thread
G 87	M6	Thread
G 43	M8	Thread
h 5	21 mm	
h 85	32 mm	
h 87	30 mm	Tolerance ±0,2
J L43	115 mm	
j B4	108 mm	
J L4	10 mm	



Medidas

H ₇	6 mm	
h ₁	25 mm	
L ₄	29 mm	Length of Shaft Support Block with Drive System
L ₅	20 mm	Length of Shaft Support Block without drive System
L ₈₈	37 mm	
L ₈₆	8 mm	
R _z	72 mm	
H ₅	42 mm	Height of Shaft Support Blocks



Datos técnicos

v_{max}	0,25 m/s	Maximum Speed
a_{max}	10 m/s ²	Maximum Acceleration
d_0	16 mm	Spindle Diameter
P	5 mm	Spindle Pitch
m_{LAW}	1,6 kg	Mass of Carriage
I_s	0,313 kg*cm ²	Mass moment of inertia of threaded Spindle
C_I	4.220 N	Load direction I: compressive load
C_{0I}	5.120 N	Load direction I: compressive load
C_{II}	2.500 N	Load direction II: tensile load
C_{0II}	3.280 N	Load direction II: tensile load
C_{III}	3.880 N	Load direction III: lateral load
C_{0III}	4.600 N	Load direction III: lateral load
C	9.300 N	Load capacity Spindle Nut dyn
C_0	13.100 N	Load capacity Spindle Nut stat
C_a	13.400 N	Load capacity fixed Spindle bearing dyn
C_{0a}	18.800 N	Load capacity fixed Spindle bearing stat
M_{0x}	109 Nm	Max. permissible static moment per Carriage
M_{0y}	130 Nm	Max. permissible static moment per Carriage
M_{0z}	100 Nm	Max. permissible static moment per Carriage

Información adicional

6 Nm	Max. permissible drive torque
ZKLN1034.2RS-PE	Rolling Bearings
0,025 mm	Repeat Accuracy ±
0,313 kg*cm ²	Mass moment of inertia of threaded Spindle
KBO20-PP-AS	Bearing



Rango de temperatura

min	0 °C	Minimum operating Temperatur
max	80 °C	Maximum operating Temperatur