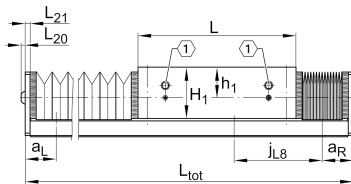
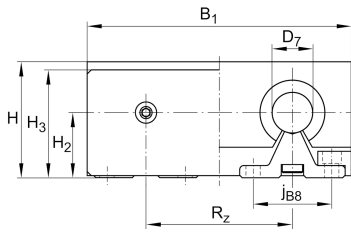
**LTS20-130-1** [↗](#)

Mesa lineal

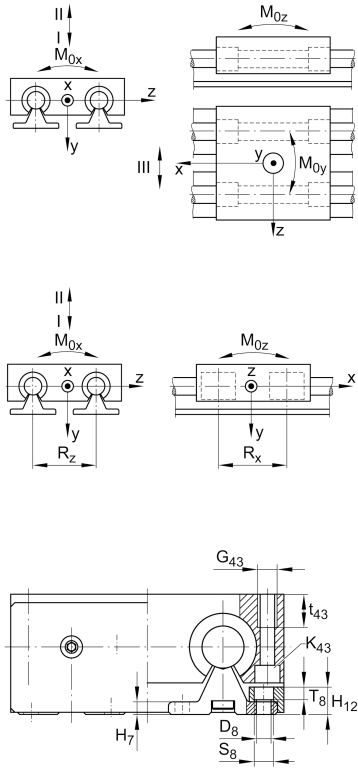
Información técnica

**Variante de su producto actual**

Size code	20	
Drive type	OA	Without drive
Length of carriage	130	130 mm
Bellow	1	Yes

Medidas principales y datos de rendimiento

H	57 mm	Total Height
B ₁	130 mm	Total Width
L	130 mm	Length of carriage



Medidas de montaje

D 7	20 mm	Tolerance h7
D 8	6,6 mm	
H 1	42 mm	Height of carriage
H 12	13 mm	
H 2	32 mm	
H 3	53 mm	
J B43	115 mm	
j B8	37 mm	
j L8	100 mm	
K 43	M6	
L 20	3,3 mm	
L 21	4 mm	
L tot	3.800 mm	Maximum length
R x	74,6 mm	
S	11 mm	
T 8	6,1 mm	
t 43	18 mm	Depth of Thread
B B	29 mm	Length of Bellows Fastener
F BL	1,43 mm	Effective length factor of bellow
G 43	M8	Thread

Medidas

H 7	6 mm
h 1	25 mm
R z	72 mm



Datos técnicos

v_{\max}	5 m/s	Maximum Speed
a_{\max}	20 m/s ²	Maximum Acceleration
m_{LAW}	1,6 kg	Mass of Carriage
C_{I}	4.220 N	Load direction I: compressive load
C_{0I}	5.120 N	Load direction I: compressive load
C_{II}	2.500 N	Load direction II: tensile load
C_{0II}	3.280 N	Load direction II: tensile load
C_{III}	3.880 N	Load direction III: lateral load
C_{0III}	4.600 N	Load direction III: lateral load
M_{0x}	109 Nm	Max. permissible static moment per Carriage
M_{0y}	130 Nm	Max. permissible static moment per Carriage
M_{0z}	100 Nm	Max. permissible static moment per Carriage

Información adicional

KBO20-PP-AS Bearing

Rango de temperatura

min	0 °C	Minimum operating Temperatur
max	80 °C	Maximum operating Temperatur