**LTS16-100-TR12x3-M-1** [↗](#)

Mesa lineal

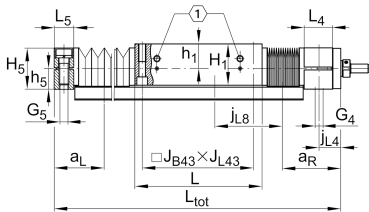
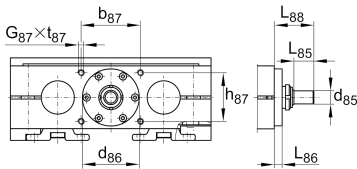
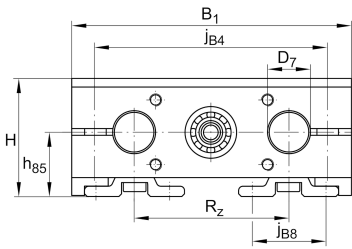
Información técnica

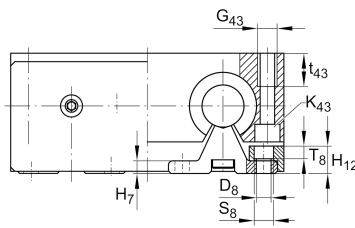
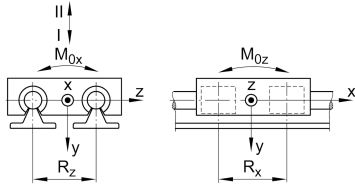
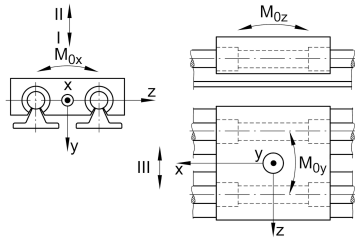
Variante de su producto actual

Size code	16	indicación de tamaño
Drive type	TGT	Trapezoidal screw drive
Length of carriage	100	100 mm
Spindle diameter	12	12mm
Spindle pitch	03	3 mm
Spindle nut design	M	Cylinder nut
Bellow	1	Yes

Medidas principales y datos de rendimiento

H	48 mm	Total Height
B ₁	100 mm	Total Width
L	100 mm	Length of carriage





Medidas de montaje

D 7	16 mm	Tolerance h7
D 8	5,5 mm	
H 1	35,5 mm	Height of carriage
H 12	11,5 mm	
J B43	88 mm	
j B8	33 mm	
j L8	100 mm	
K 43	M5	
L tot	2.900 mm	Maximum length
R x	55,6 mm	
S	3 mm	Safety distance
S	10 mm	
T 8	5,6 mm	
T 86	3 mm	Depth Fit
t 43	13 mm	Depth of Thread
t 87	12 mm	Depth of Thread
B B	21 mm	Length of Bellows Fastener
F BL	1,58 mm	Effective length factor of bellow
b 87	44 mm	Tolerance ±0,2
d 85	5 mm	Diameter drive shaft, Tolerance h7
D 86	17 mm	Tolerance H7
G 4	M8	Thread
G 5	M8	Thread
G 87	M5	Thread
G 43	M6	Thread
h 5	16 mm	
h 85	26 mm	
h 87	22 mm	Tolerance ±0,2

La hoja de datos solo contiene una descripción general de los datos técnicos del producto seleccionado. Consulte la documentación adicional de este producto. Para más información, utilice el siguiente enlace en nuestra página web: Formulario de contacto

J L43 88 mm



Medidas

H ₇	5 mm	
h ₁	22 mm	
L ₄	24 mm	Length of Shaft Support Block with Drive System
L ₅	18 mm	Length of Shaft Support Block without drive System
L ₈₈	28,5 mm	
R _Z	54 mm	
H ₅	32 mm	Height of Shaft Support Blocks

Datos técnicos

v _{max}	0,075 m/s	Maximum Speed
a _{max}	2,5 m/s ²	Maximum Acceleration
d ₀	12 mm	Spindle Diameter
P	3 mm	Spindle Pitch
m _{LAW}	0,8 kg	Mass of Carriage
I _s	0,094 kg*cm ²	Mass moment of inertia of threaded Spindle
C _I	2.110 N	Load direction I: compressive load
C _{0I}	2.480 N	Load direction I: compressive load
C _{II}	880 N	Load direction II: tensile load
C _{0II}	1.140 N	Load direction II: tensile load
C _{III}	2.240 N	Load direction III: lateral load
C _{0III}	2.900 N	Load direction III: lateral load
C ₀	630 N	Load capacity Spindle Nut stat
C _{0a}	630 N	Load capacity fixed Spindle bearing stat
M _{0x}	29 Nm	Max. permissible static moment per Carriage
M _{0y}	50 Nm	Max. permissible static moment per Carriage
M _{0z}	32 Nm	Max. permissible static moment per Carriage



Información adicional

1,5 Nm	Max. permissible drive torque
30/6-2RS	Rolling Bearings
0,094 kg*cm ²	Mass moment of inertia of threaded Spindle
KBO16-PP-AS	Bearing

Rango de temperatura

min	0 °C	Minimum operating Temperatur
max	80 °C	Maximum operating Temperatur