

**LTS16-100-1204-M-1**

Mesa lineal

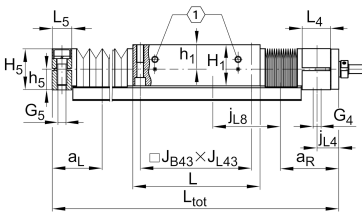
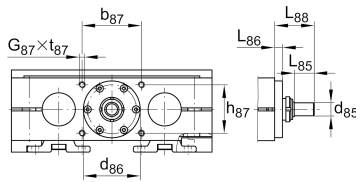
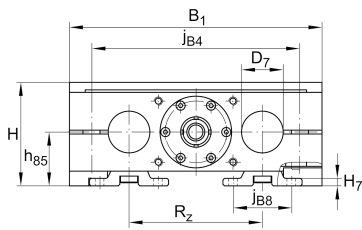
Información técnica

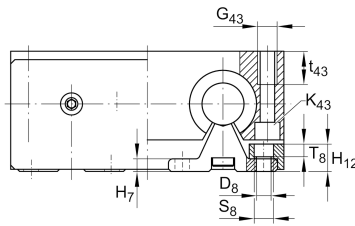
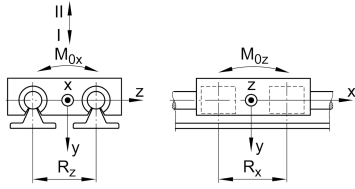
Variante de su producto actual

Size code	16	indicación de tamaño
Drive type	KGT	Ball screw drive
Length of carriage	100	100 mm
Spindle diameter	12	12mm
Spindle pitch	04	4 mm
Spindle nut design	M	Cylinder nut
Bellow	1	Yes

Medidas principales y datos de rendimiento

H	48 mm	Total Height
B ₁	100 mm	Total Width
L	100 mm	Length of carriage





Medidas de montaje

D 7	16 mm	Tolerance h7
D 8	5,5 mm	
H 1	35,5 mm	Height of carriage
H 12	11,5 mm	
J B43	88 mm	
j B8	33 mm	
j L8	100 mm	
K 43	M5	
L 74	6,5 mm	
L tot	2.900 mm	Maximum length
R x	55,6 mm	
S	4 mm	Safety distance
S	10 mm	
T 8	5,6 mm	
t 43	13 mm	Depth of Thread
t 87	12 mm	Depth of Thread
B B	21 mm	Length of Bellows Fastener
F BL	1,58 mm	Effective length factor of bellow
b 87	44 mm	Tolerance ±0,2
d 74	38 mm	
d 85	5 mm	Diameter drive shaft, Tolerance h7
d 86	24 mm	Tolerance g7
G 4	M8	Thread
G 5	M8	Thread
G 87	M5	Thread
G 43	M6	Thread
h 5	16 mm	
h 85	26 mm	
h 87	22 mm	Tolerance ±0,2



Medidas

H 7	5 mm	
h 1	22 mm	
L 4	24 mm	Length of Shaft Support Block with Drive System
L 5	18 mm	Length of Shaft Support Block without drive System
L 88	28,5 mm	
L 86	1,5 mm	
R z	54 mm	
H 5	32 mm	Height of Shaft Support Blocks



Datos técnicos

v_{max}	0,3 m/s	Maximum Speed
a_{max}	20 m/s ²	Maximum Acceleration
d_0	12 mm	Spindle Diameter
P	4 mm	Spindle Pitch
m_{LAW}	0,8 kg	Mass of Carriage
I_s	0,11 kg*cm ²	Mass moment of inertia of threaded Spindle
C_I	2.110 N	Load direction I: compressive load
C_{0I}	2.480 N	Load direction I: compressive load
C_{II}	880 N	Load direction II: tensile load
C_{0II}	1.140 N	Load direction II: tensile load
C_{III}	2.240 N	Load direction III: lateral load
C_{0III}	2.900 N	Load direction III: lateral load
C	4.900 N	Load capacity Spindle Nut dyn
C_0	6.600 N	Load capacity Spindle Nut stat
C_a	6.900 N	Load capacity fixed Spindle bearing dyn
C_{0a}	8.500 N	Load capacity fixed Spindle bearing stat
M_{0x}	29 Nm	Max. permissible static moment per Carriage
M_{0y}	50 Nm	Max. permissible static moment per Carriage
M_{0z}	32 Nm	Max. permissible static moment per Carriage

Información adicional

	1,5 Nm	Max. permissible drive torque
	ZKLN0624.2RS-PE	Rolling Bearings
	0,05 mm	Repeat Accuracy ±
	0,11 kg*cm ²	Mass moment of inertia of threaded Spindle
	KBO16-PP-AS	Bearing



Rango de temperatura

min	0 °C	Minimum operating Temperatur
max	80 °C	Maximum operating Temperatur