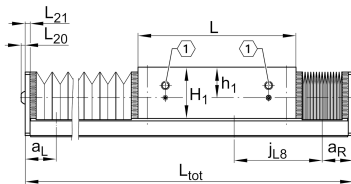
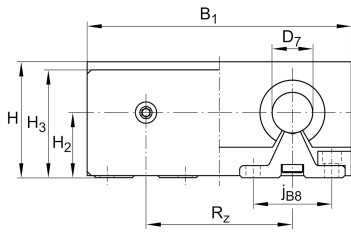
**LTS16-100-1** [↗](#)

Mesa lineal

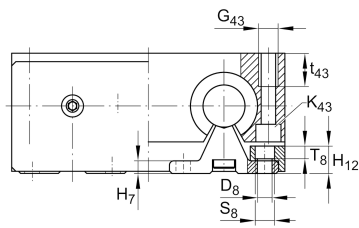
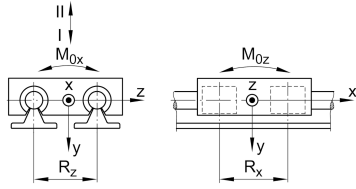
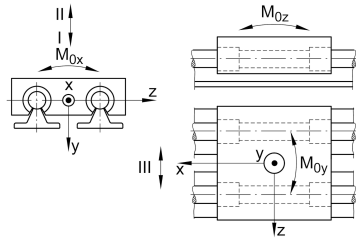
Información técnica

**Variante de su producto actual**

| | | |
|--------------------|-----|----------------------|
| Size code | 16 | indicación de tamaño |
| Drive type | OA | Without drive |
| Length of carriage | 100 | 100 mm |
| Bellow | 1 | Yes |

Medidas principales y datos de rendimiento

| | | |
|----------------|--------|--------------------|
| H | 48 mm | Total Height |
| B ₁ | 100 mm | Total Width |
| L | 100 mm | Length of carriage |



Medidas de montaje

| | | |
|-------|----------|-----------------------------------|
| D 7 | 16 mm | Tolerance h7 |
| D 8 | 5,5 mm | |
| H 1 | 35,5 mm | Height of carriage |
| H 12 | 11,5 mm | |
| H 2 | 26 mm | |
| H 3 | 42 mm | |
| J B43 | 88 mm | |
| j B8 | 33 mm | |
| j L8 | 100 mm | |
| K 43 | M5 | |
| L 20 | 3,3 mm | |
| L 21 | 4 mm | |
| L tot | 3.000 mm | Maximum length |
| R x | 55,6 mm | |
| S | 10 mm | |
| T 8 | 5,6 mm | |
| t 43 | 13 mm | Depth of Thread |
| B B | 29 mm | Length of Bellows Fastener |
| F BL | 1,58 mm | Effective length factor of bellow |
| G 43 | M6 | Thread |
| J L43 | 88 mm | |

Medidas

| | | |
|-----|-------|--|
| H 7 | 5 mm | |
| h 1 | 22 mm | |
| R z | 54 mm | |



Datos técnicos

| | | |
|------------|---------------------|---|
| v_{max} | 5 m/s | Maximum Speed |
| a_{max} | 20 m/s ² | Maximum Acceleration |
| m_{LAW} | 0,8 kg | Mass of Carriage |
| C_{I} | 2.110 N | Load direction I: compressive load |
| C_{0I} | 2.480 N | Load direction I: compressive load |
| C_{II} | 880 N | Load direction II: tensile load |
| C_{0II} | 1.140 N | Load direction II: tensile load |
| C_{III} | 2.240 N | Load direction III: lateral load |
| C_{0III} | 2.900 N | Load direction III: lateral load |
| M_{0x} | 29 Nm | Max. permissible static moment per Carriage |
| M_{0y} | 50 Nm | Max. permissible static moment per Carriage |
| M_{0z} | 32 Nm | Max. permissible static moment per Carriage |

Información adicional

KBO16-PP-AS Bearing

Rango de temperatura

| | | |
|-----|-------|------------------------------|
| min | 0 °C | Minimum operating Temperatur |
| max | 80 °C | Maximum operating Temperatur |