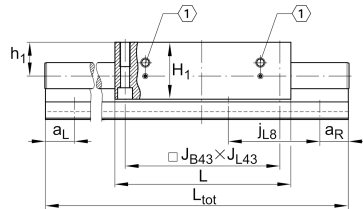
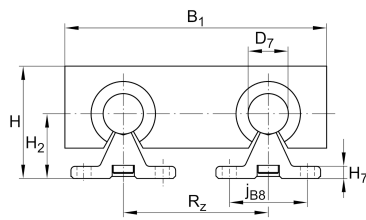
**LTS16-100-0** [↗](#)

Mesa lineal

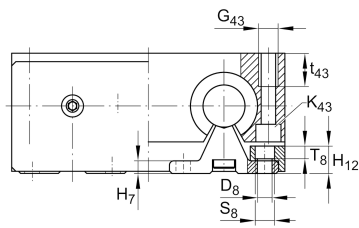
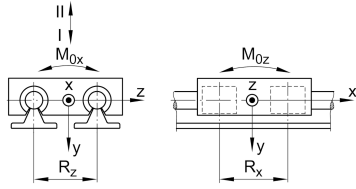
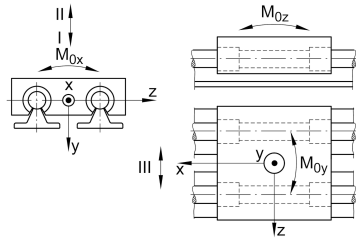
Información técnica

**Variante de su producto actual**

Size code	16	indicación de tamaño
Drive type	OA	Without drive
Length of carriage	100	100 mm
Bellow	0	No

Medidas principales y datos de rendimiento

H	48 mm	Total Height
B ₁	100 mm	Total Width
L	100 mm	Length of carriage



Medidas de montaje

D 7	16 mm	Tolerance h7
D 8	5,5 mm	
H 1	35,5 mm	Height of carriage
H 12	11,5 mm	
H 2	26 mm	
J B43	88 mm	
j B8	33 mm	
j L8	100 mm	
K 43	M5	
L 20	3,3 mm	
L 21	4 mm	
L tot	6.000 mm	Maximum length
R x	55,6 mm	
S	10 mm	
T 8	5,6 mm	
t 43	13 mm	Depth of Thread
G 43	M6	Thread
J L43	88 mm	

Medidas

H 7	5 mm	
h 1	22 mm	
R z	54 mm	



Datos técnicos

v_{\max}	5 m/s	Maximum Speed
a_{\max}	20 m/s ²	Maximum Acceleration
m_{LAW}	0,8 kg	Mass of Carriage
C_{I}	2.110 N	Load direction I: compressive load
C_{0I}	2.480 N	Load direction I: compressive load
C_{II}	880 N	Load direction II: tensile load
C_{0II}	1.140 N	Load direction II: tensile load
C_{III}	2.240 N	Load direction III: lateral load
C_{0III}	2.900 N	Load direction III: lateral load
M_{0x}	29 Nm	Max. permissible static moment per Carriage
M_{0y}	50 Nm	Max. permissible static moment per Carriage
M_{0z}	32 Nm	Max. permissible static moment per Carriage

Información adicional

KBO16-PP-AS Bearing

Rango de temperatura

min	0 °C	Minimum operating Temperatur
max	80 °C	Maximum operating Temperatur