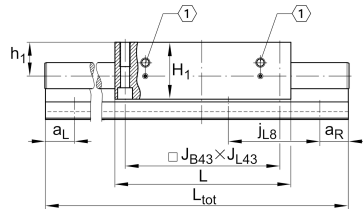
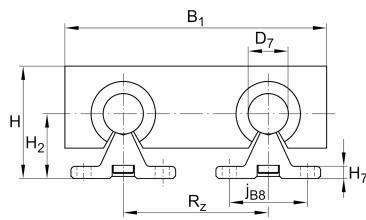


**LTS12-85-0** [↗](#)

Mesa lineal

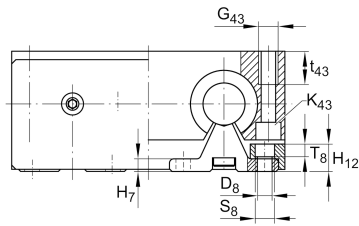
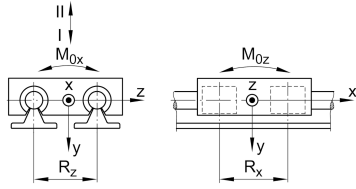
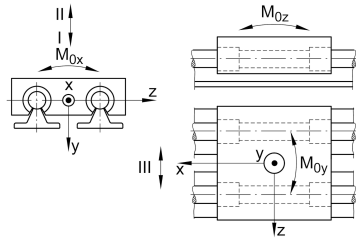
Información técnica

**Variante de su producto actual**

Size code	12	
Drive type	OA	Without drive
Length of carriage	85	85 mm
Bellow	0	No

Medidas principales y datos de rendimiento

H	40 mm	Total Height
B ₁	85 mm	Total Width
L	85 mm	Length of carriage



Medidas de montaje

D 7	12 mm	Tolerance h7
D 8	4,5 mm	
H 1	30 mm	Height of carriage
H 2	22 mm	
J B43	73 mm	
j B8	29 mm	
j L8	75 mm	
K 43	M5	
L 21	4 mm	
L tot	6.000 mm	Maximum length
R x	46 mm	
t 43	13 mm	Depth of Thread
G 43	M6	Thread
J L43	73 mm	

Medidas

H 7	5 mm	
h 1	18 mm	
R z	42 mm	



Datos técnicos

v_{max}	5 m/s	Maximum Speed
a_{max}	20 m/s ²	Maximum Acceleration
m_{LAW}	0,5 kg	Mass of Carriage
C_{I}	1.580 N	Load direction I: compressive load
C_{0I}	1.780 N	Load direction I: compressive load
C_{II}	680 N	Load direction II: tensile load
C_{0II}	840 N	Load direction II: tensile load
C_{III}	1.715 N	Load direction III: lateral load
C_{0III}	2.320 N	Load direction III: lateral load
M_{0x}	23 Nm	Max. permissible static moment per Carriage
M_{0y}	32 Nm	Max. permissible static moment per Carriage
M_{0z}	21 Nm	Max. permissible static moment per Carriage

Información adicional

KBO12-PP-AS Bearing

Rango de temperatura

min	0 °C	Minimum operating Temperatur
max	80 °C	Maximum operating Temperatur