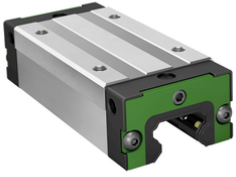


**KWLT15-S**

Carro con recirculación de bolas

Slim carriage, standard end plate, for four-row linear recirculating ball bearing and guideway assembly



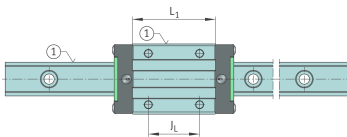
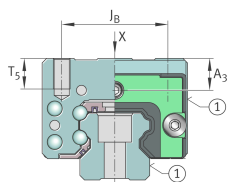
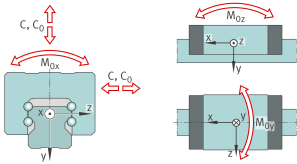
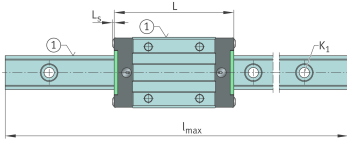
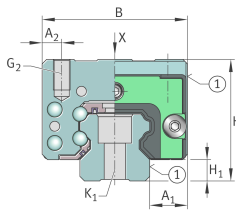
Información técnica

Variante de su producto actual

Size code	15	
Carriage design	S	Narrow design

Medidas principales y datos de rendimiento

H	24 mm	Altura sistema
B	34 mm	Width carriage
L	62 mm	Overall length carriage
C	8.400 N	Capacidad de carga dinámica
C ₀	16.200 N	Capacidad de carga estática
M _{0x}	140 Nm	Static moment rating about X-axis
M _{0y}	99 Nm	Static moment rating about Y-axis
M _{0z}	99 Nm	Static moment rating about Z-axis
M _{0x}	65 Nm	Dynamic moment rating about X-axis
M _{0y}	85 Nm	Dynamic moment rating about y-axis
M _{0z}	85 Nm	Dynamic moment rating about Z-axis
≈m	0,17 kg	Peso





Medidas de montaje

A ₁	9,5 mm	
A ₂	4 mm	
L ₁	40 mm	Carrier length
H ₁	4,6 mm	
J _B	26 mm	
J _L	26 mm	
A ₃	4,3 mm	Posición del conector de lubricación
T ₅	4 mm	
G ₂	M4	Thread size, DIN ISO 4762-12.9
G2 M _A	4,95 Nm	Par de apriete máximo

Información adicional

VMKB_065	KWLT	Nombre de material
----------	------	--------------------