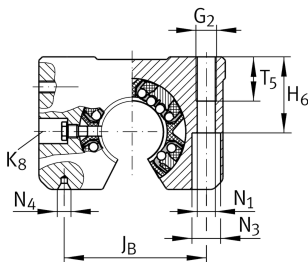
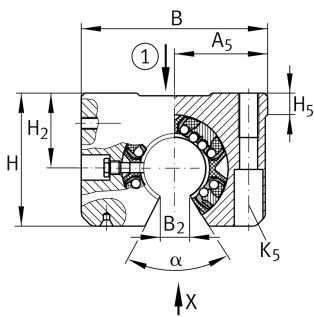


**KGSNOS50-PP-AS**

Unidad de rodamiento lineal de bolas

Linear ball bearing and housing unit; Heavy duty range, With segment cutout, with slot, sealed, greased, with relubrication facility

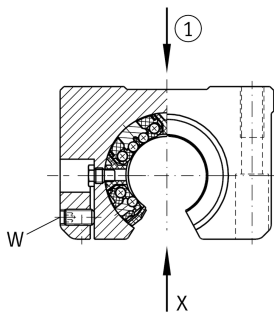
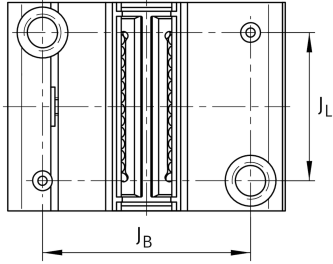
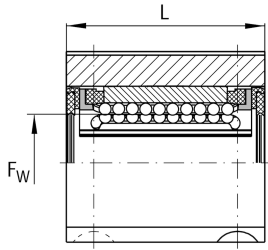
Información técnica

**Variante de su producto actual**

Size code	50
Seal	PP
Función de relubricación	AS

Medidas principales y datos de rendimiento

F _w	50 mm	Diameter of ball complement
H	88 mm	Height
L	100 mm	Longitud
B	132 mm	Anchura
C _{max}	15.100 N	Load capacity dyn.
C _{0 max}	13.900 N	Load capacity stat.
m	2,67 kg	Peso

**Medidas de montaje**

J_B	108 mm	
Tol J_B	+ 0,15 mm	Upper tolerance
Tol J_B	- 0,15 mm	Lower tolerance
A_5	66 mm	
Tol A_5	+ 0,01 mm	Upper tolerance
Tol A_5	- 0,01 mm	Lower tolerance
B_2	22,7 mm	
J_L	50 mm	Distance
Tol J_L	+ 0,15 mm	Upper tolerance
Tol J_L	- 0,15 mm	Lower tolerance
H_2	50 mm	Center height
Tol H_2	+ 0,008 mm	Upper tolerance
Tol H_2	- 0,016 mm	Lower tolerance
H_5	11,1 mm	
T_5	35 mm	
H_6	49 mm	
G_2	M16	
N_1	13,5 mm	
N_4	4x8.5	
N_3	20 mm	
K_5	M12	
K_8	NIP5MZ	Lubrication nipple
W	5 mm	Width across flats
	6	Ball rows
α	54 °	Angle