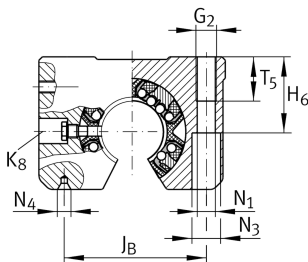
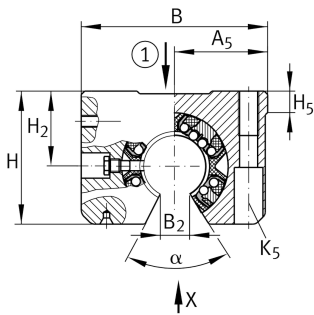
**KGSNOS40-PP-AS**

Unidad de rodamiento lineal de bolas

Linear ball bearing and housing unit; Heavy duty range, With segment cutout, with slot, sealed, greased, with relubrication facility

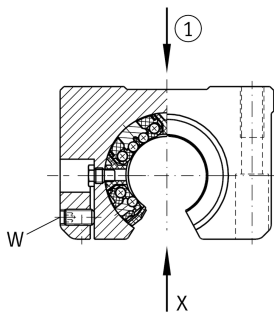
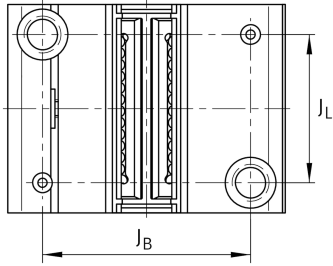
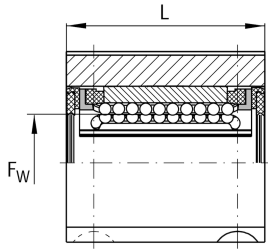
Información técnica

**Variante de su producto actual**

Size code	25
Seal	PP
Función de relubricación	AS

Medidas principales y datos de rendimiento

F _W	40 mm	Diameter of ball complement
H	77 mm	Height
L	80 mm	Longitud
B	108 mm	Anchura
C _{max}	10.200 N	Load capacity dyn.
C _{0 max}	9.600 N	Load capacity stat.
≈m	1,4 kg	Peso

**Medidas de montaje**

J _B	86 mm	
Tol J _B	+ 0,15 mm	Upper tolerance
Tol J _B	- 0,15 mm	Lower tolerance
A ₅	54 mm	
Tol A ₅	+ 0,01 mm	Upper tolerance
Tol A ₅	- 0,01 mm	Lower tolerance
B ₂	18,2 mm	
J _L	58 mm	Distance
Tol J _L	+ 0,15 mm	Upper tolerance
Tol J _L	- 0,15 mm	Lower tolerance
H ₂	45 mm	Center height
Tol H ₂	+ 0,008 mm	Upper tolerance
Tol H ₂	- 0,016 mm	Lower tolerance
H ₅	12,4 mm	
T ₅	26 mm	
H ₆	44 mm	
G ₂	M12	
N ₁	10,5 mm	
N ₄	3.15x6.7	
N ₃	18 mm	
K ₅	M10	
K ₈	NIP5MZ	Lubrication nipple
W	4 mm	Width across flats
	6	Ball rows
α	56 °	Angle