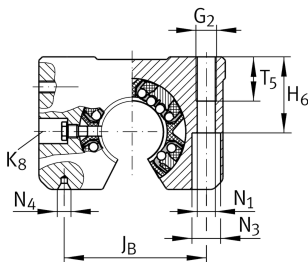
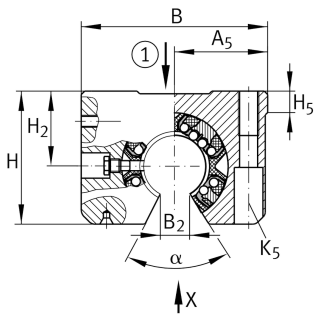
**KGSNOS30-PP-AS**

## Unidad de rodamiento lineal de bolas

Linear ball bearing and housing unit; Heavy duty range, With segment cutout, with slot, sealed, greased, with relubrication facility

## Información técnica

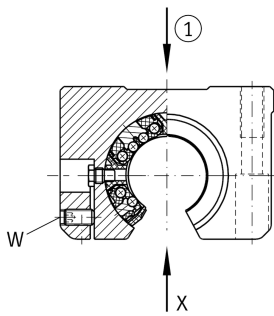
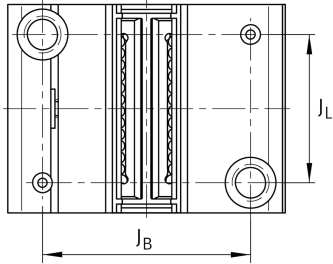
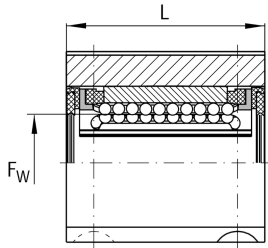


## Variante de su producto actual

Size code	30
Seal	PP
Función de relubricación	AS

## Medidas principales y datos de rendimiento

F <sub>w</sub>	30 mm	Diameter of ball complement
H	60 mm	Height
L	68 mm	Longitud
B	87 mm	Anchura
C <sub>max</sub>	5.900 N	Load capacity dyn.
C <sub>0 max</sub>	6.000 N	Load capacity stat.
≈m	0,76 kg	Peso

**Medidas de montaje**

$J_B$	68 mm	
Tol $J_B$	+ 0,15 mm	Upper tolerance
Tol $J_B$	- 0,15 mm	Lower tolerance
$A_5$	43,5 mm	
Tol $A_5$	+ 0,01 mm	Upper tolerance
Tol $A_5$	- 0,01 mm	Lower tolerance
$B_2$	14,3 mm	
$J_L$	45 mm	Distance
Tol $J_L$	+ 0,15 mm	Upper tolerance
Tol $J_L$	- 0,15 mm	Lower tolerance
$H_2$	35 mm	Center height
Tol $H_2$	+ 0,008 mm	Upper tolerance
Tol $H_2$	- 0,016 mm	Lower tolerance
$H_5$	9,7 mm	
$T_5$	22 mm	
$H_6$	34 mm	
$G_2$	M10	
$N_1$	8,4 mm	
$N_4$	2.5x5.3	
$N_3$	15 mm	
$K_5$	M8	
$K_8$	NIP5MZ	Lubrication nipple
$W$	3 mm	Width across flats
	6	Ball rows
$\alpha$	57 °	Angle