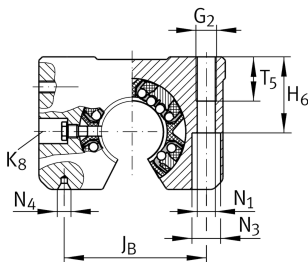
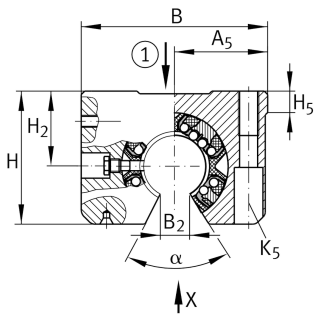
**KGSNOS20-PP-AS**

Unidad de rodamiento lineal de bolas

Linear ball bearing and housing unit; Heavy duty range, With segment cutout, with slot, sealed, greased, with relubrication facility

Información técnica

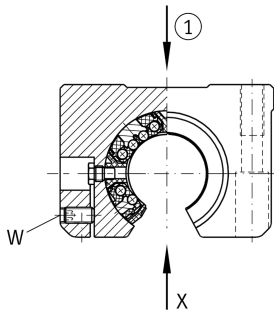
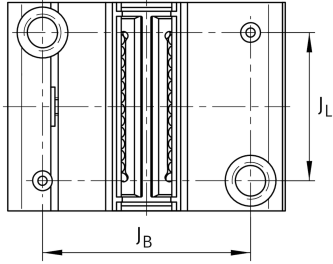
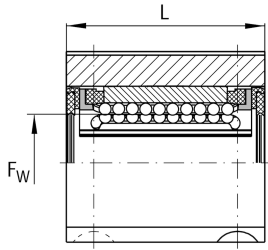


Variante de su producto actual

Size code	20
Seal	PP
Función de relubricación	AS

Medidas principales y datos de rendimiento

F _w	20 mm	Diameter of ball complement
H	42 mm	Height
L	45 mm	Longitud
B	60 mm	Anchura
C _{max}	2.200 N	Load capacity dyn.
C _{0 max}	2.310 N	Load capacity stat.
≈m	0,2 kg	Peso

**Medidas de montaje**

J_B	45 mm	
Tol J_B	+ 0,15 mm	Upper tolerance
Tol J_B	- 0,15 mm	Lower tolerance
A_5	30 mm	
Tol A_5	+ 0,01 mm	Upper tolerance
Tol A_5	- 0,01 mm	Lower tolerance
B_2	10 mm	
J_L	32 mm	Distance
Tol J_L	+ 0,15 mm	Upper tolerance
Tol J_L	- 0,15 mm	Lower tolerance
H_2	25 mm	Center height
Tol H_2	+ 0,008 mm	Upper tolerance
Tol H_2	- 0,016 mm	Lower tolerance
H_5	8 mm	
T_5	18 mm	
H_6	24 mm	
G_2	M8	
N_1	6,6 mm	
N_4	2x4.25	
N_3	11 mm	
K_5	M6	
K_8	NIP4MZ	Lubrication nipple
W	2,5 mm	Width across flats
	6	Ball rows
α	55 °	Angle