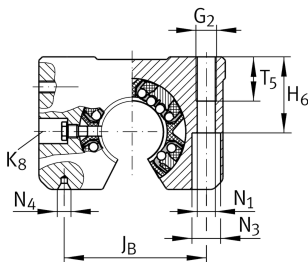
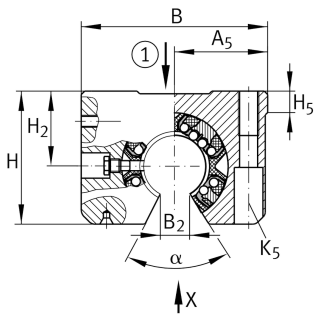
**KGSNOS16-PP-AS** [↗](#)

## Unidad de rodamiento lineal de bolas

Linear ball bearing and housing unit; Heavy duty range, With segment cutout, with slot, sealed, greased, with relubrication facility

## Información técnica

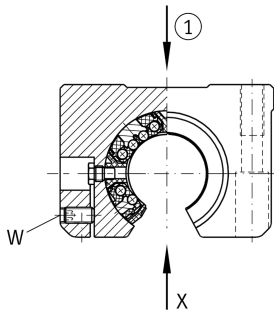
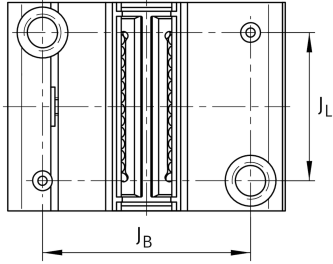
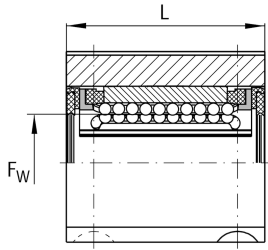


## Variante de su producto actual

Size code	16	indicación de tamaño
Seal	PP	
Función de relubricación	AS	

## Medidas principales y datos de rendimiento

F <sub>W</sub>	16 mm	Diameter of ball complement
H	35 mm	Height
L	37 mm	Longitud
B	53 mm	Anchura
C <sub>max</sub>	1.430 N	Load capacity dyn.
C <sub>0 max</sub>	1.550 N	Load capacity stat.
≈m	0,15 kg	Peso

**Medidas de montaje**

$J_B$	40 mm	
Tol $J_B$	+ 0,15 mm	Upper tolerance
Tol $J_B$	- 0,15 mm	Lower tolerance
$A_5$	26,5 mm	
Tol $A_5$	+ 0,01 mm	Upper tolerance
Tol $A_5$	- 0,01 mm	Lower tolerance
$B_2$	10,1 mm	
$J_L$	26 mm	Distance
Tol $J_L$	+ 0,15 mm	Upper tolerance
Tol $J_L$	- 0,15 mm	Lower tolerance
$H_2$	22 mm	Center height
Tol $H_2$	+ 0,008 mm	Upper tolerance
Tol $H_2$	- 0,016 mm	Lower tolerance
$H_5$	7,5 mm	
$T_5$	13 mm	
$H_6$	21 mm	
$G_2$	M6	
$N_1$	5,3 mm	
$N_4$	1.6x3.35	
$N_3$	10 mm	
$K_5$	M5	
$K_8$	NIP4MZ	Lubrication nipple
$W$	2,5 mm	Width across flats
	6	Ball rows
$\alpha$	68 °	Angle