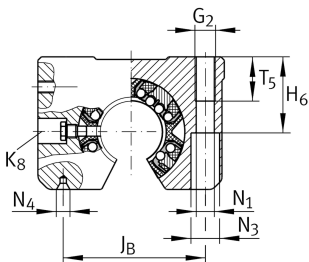
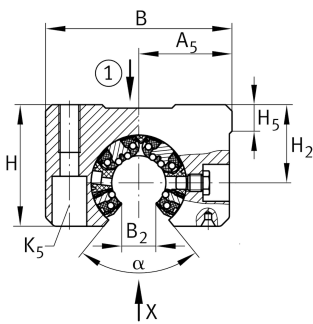


**KGSNOS12-PP-AS** [↗](#)

## Unidad de rodamiento lineal de bolas

Linear ball bearing and housing unit; Heavy duty range, With segment cutout, with slot, sealed, greased, with relubrication facility

## Información técnica

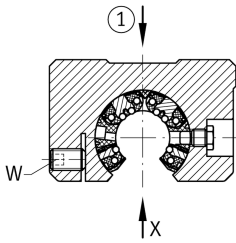
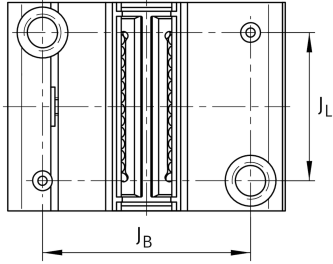
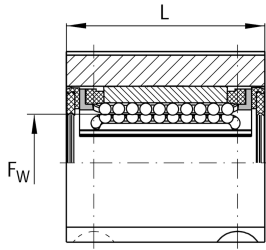


## Variante de su producto actual

Size code	12
Seal	PP
Función de relubricación	AS

## Medidas principales y datos de rendimiento

F <sub>W</sub>	12 mm	Diameter of ball complement
H	28 mm	Height
L	32 mm	Longitud
B	43 mm	Anchura
C <sub>max</sub>	900 N	Load capacity dyn.
C <sub>0 max</sub>	1.100 N	Load capacity stat.
≈m	80 g	Peso

**Medidas de montaje**

$J_B$	32 mm	
Tol $J_B$	+ 0,15 mm	Upper tolerance
Tol $J_B$	- 0,15 mm	Lower tolerance
$A_5$	21,5 mm	
Tol $A_5$	+ 0,01 mm	Upper tolerance
Tol $A_5$	- 0,01 mm	Lower tolerance
$B_2$	7,6 mm	
$J_L$	23 mm	Distance
Tol $J_L$	+ 0,15 mm	Upper tolerance
Tol $J_L$	- 0,15 mm	Lower tolerance
$H_2$	18 mm	Center height
Tol $H_2$	+ 0,008 mm	Upper tolerance
Tol $H_2$	- 0,016 mm	Lower tolerance
$H_5$	6,1 mm	
$T_5$	11 mm	
$H_6$	16,5 mm	
$G_2$	M5	
$N_1$	4,3 mm	
$N_4$	1,6x3,35	
$N_3$	8 mm	
$K_5$	M4	
$K_8$	NIP4MZ	Lubrication nipple
$W$	2,5 mm	Width across flats
	6	Ball rows
$\alpha$	78 °	Angle