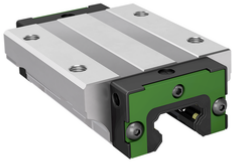


**KWLTS45-AL-V0-G3**

Carro con recirculación de bolas

Long flanged carriage, short end plate, for four-row linear recirculating ball bearing and guideway assembly



## Información técnica

## Variante de su producto actual

|                 |    |                  |
|-----------------|----|------------------|
| Size code       | 45 |                  |
| Carriage design | AL | Long design      |
| Precarga        | V0 | Slight clearance |
| Accuracy class  | G3 |                  |

## Medidas principales y datos de rendimiento

|                 |           |                                    |
|-----------------|-----------|------------------------------------|
| H               | 60 mm     | Altura sistema                     |
| B               | 120 mm    | Width carriage                     |
| L               | 161,2 mm  | Overall length carriage            |
| C               | 72.000 N  | Capacidad de carga dinámica        |
| C <sub>0</sub>  | 135.000 N | Capacidad de carga estática        |
| M <sub>0x</sub> | 3.600 Nm  | Static moment rating about X-axis  |
| M <sub>0y</sub> | 2.600 Nm  | Static moment rating about Y-axis  |
| M <sub>0z</sub> | 2.600 Nm  | Static moment rating about Z-axis  |
| M <sub>0x</sub> | 1.735 Nm  | Dynamic moment rating about X-axis |
| M <sub>0y</sub> | 2.440 Nm  | Dynamic moment rating about y-axis |
| M <sub>0z</sub> | 2.440 Nm  | Dynamic moment rating about Z-axis |
| m               | 3,35 kg   | Peso                               |





### Medidas de montaje

---

|                   |         |                                      |
|-------------------|---------|--------------------------------------|
| A <sub>1</sub>    | 37,5 mm |                                      |
| A <sub>2</sub>    | 10 mm   |                                      |
| L <sub>1</sub>    | 128 mm  | Carrier length                       |
| H <sub>1</sub>    | 14 mm   |                                      |
| J <sub>B</sub>    | 100 mm  |                                      |
| J <sub>L</sub>    | 80 mm   |                                      |
| A <sub>3</sub>    | 8,5 mm  | Posición del conector de lubricación |
| T <sub>5</sub>    | 15 mm   |                                      |
| G <sub>2</sub>    | M12     | Thread size, DIN ISO 4762-12.9       |
| G2 M <sub>A</sub> | 140 Nm  | Par de apriete máximo                |

### Información adicional

---

|          |       |                    |
|----------|-------|--------------------|
| VMKB_065 | KWLTS | Nombre de material |
|----------|-------|--------------------|