**MLFI25-250-ZR-N** [↗](#)

Módulo lineal

Actuators with internal track roller guidance system and toothed belt drive. Basic design, one driven carriage with fixing slots in carriage

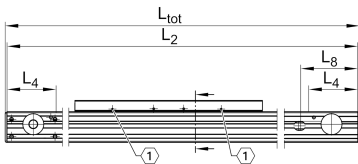
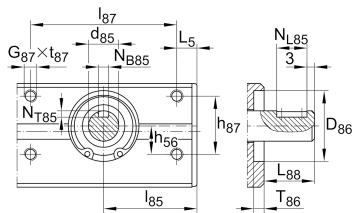
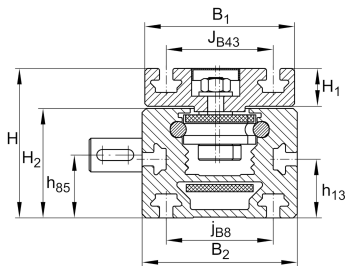
Información técnica

Variante de su producto actual

Size code	25	
Length of carriage	250	250 mm
Version	/	Standard
Ejecución	/	Basis
Drive type	(3)ZR	Toothed belt drive
Additional carriage	/	No additional carriage
Attachment to the carriage	N	T-Slots
Support rail design	/	One-piece

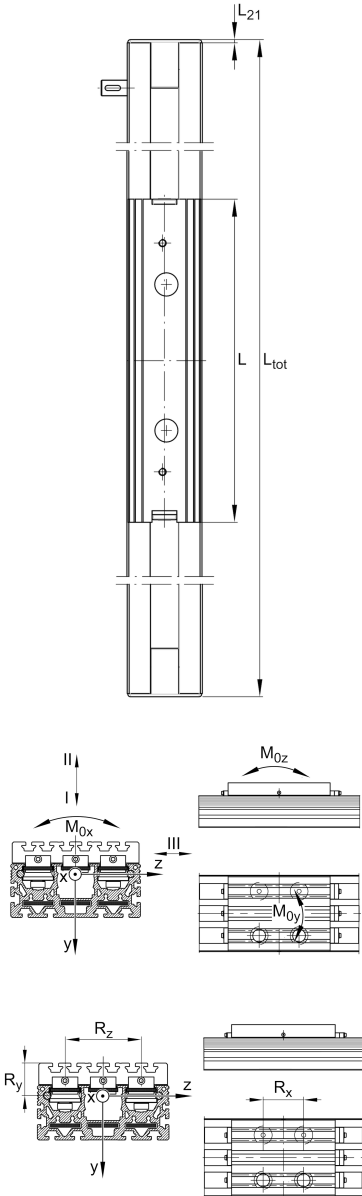
Medidas principales y datos de rendimiento

B ₂	58 mm	Total Width
H	56 mm	Altura
L	250 mm	Longitud





Medidas de montaje



D 86	28 mm	
Tol D 86	H7	Tolerance
d 85	12 mm	
L 88	20,5 mm	
G 87	M5	Thread
h 56	11,5 mm	
h 85	24,2 mm	
h 87	23 mm	Tolerance ±0,2
J B43	40 mm	
J B8	40 mm	
L 8	76 mm	
l 85	37,5 mm	
l 87	58 mm	
N B85	4 mm	Width of Keyway
Tol N B85	P9	Tolerance
N L85	12 mm	Length of Keyway
N T85	2,5 mm	Depth of Keyway, Tolerance P9
T 86	3,7 mm	Depth Fit
Tol T 86 up	0,2 mm	Upper Tolerance
Tol T 86 low	0 mm	Lower Tolerance
t 87 max	10 mm	



Medidas

B 1	56 mm	Width of Carriage
H 1	14,2 mm	Height of Carriage
H 2	41 mm	Altura
h 13	22 mm	
L 2 max	4.000 mm	Maximum length of Support Rail
L 4	65 mm	
L 5	8,5 mm	Length of Shaft Support Block without drive System
L 21	2,5 mm	
S	40 mm	Medida



Datos técnicos

m_{LAW}	0,71 kg	Mass of Carriage
m_3	1,2 kg	Mass of additional Carriage
v_{max}	4 m/s	Maximum Speed
a_{max}	20 m/s ²	Maximum Acceleration
R_x	113 mm	
R_y	22,7 mm	
R_z	3 mm	
I C	3.400 N	Load direction I: compressive load
I C ₀	2.050 N	Load direction I: compressive load
II C	3.400 N	Load direction II: tensile load
II C ₀	2.050 N	Load direction II: tensile load
III C	7.000 N	Load direction III: lateral load
III C ₀	4.150 N	Load direction III: lateral load
M _{0x per}	32 Nm	Max. permissible static moment per Carriage
M _{0y per}	290 Nm	Max. permissible static moment per Carriage
M _{0z per}	135 Nm	Max. permissible static moment per Carriage
I _y	46 cm ⁴	Geometrical moments of inertia of Support Rail
I _z	17 cm ⁴	Geometrical moments of inertia of Support Rail

Información adicional

	5,6 Nm	Max. permissible drive torque
	4 x LFR50/8-6-2Z	Track Rollers
	0,1 mm	Repeat Accuracy ±
	85 mm	Feed (mm/rotation)
	25AT5	Toothed Belt
	0,082 kg/m	Mass of Toothed Belt
	420 N	Permissible Toothed Belt operating force
	0,1 kg*cm ²	Mass moment of inertia of Gears and Gearboxes



Rango de temperatura

T _{min}	0 °C	Minimum operating Temperatur
------------------	------	------------------------------

T _{max}	80 °C	Maximum operating Temperatur
------------------	-------	------------------------------