**MLFI25-130-ZR-W2-N**

## Módulo lineal

Actuators with internal track roller guidance system and toothed belt drive. With second, driven carriage and fixing slots in carriage

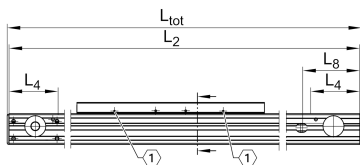
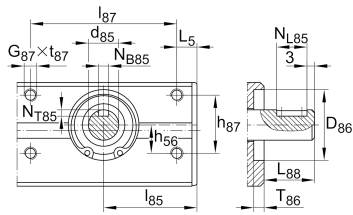
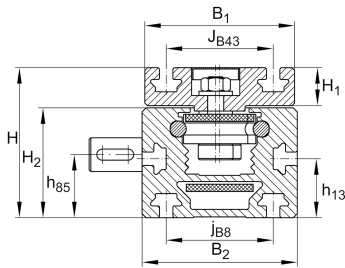
## Información técnica

## Variante de su producto actual

Size code	25	
Length of carriage	130	130 mm
Version	/	Standard
Ejecución	/	Basis
Drive type	(3)ZR	Toothed belt drive
Additional carriage	W2	Second, driven carriage
Attachment to the carriage	N	T-Slots
Support rail design	/	One-piece

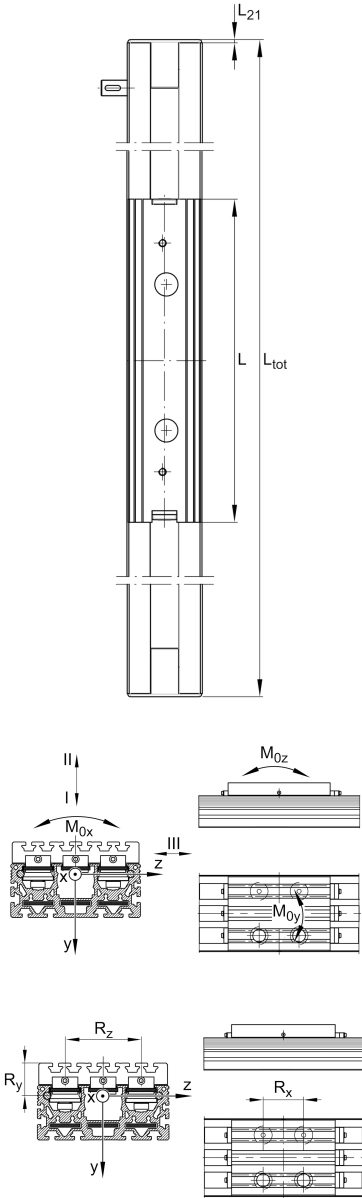
## Medidas principales y datos de rendimiento

B <sub>2</sub>	58 mm	Total Width
H	56 mm	Altura
L	130 mm	Longitud





**Medidas de montaje**



D 86	28 mm	
Tol D 86	H7	Tolerance
d 85	12 mm	
L 88	20,5 mm	
G 87	M5	Thread
h 56	11,5 mm	
h 85	24,2 mm	
h 87	23 mm	Tolerance ±0,2
J B43	40 mm	
J B8	40 mm	
L 8	76 mm	
l 85	37,5 mm	
l 87	58 mm	
N B85	4 mm	Width of Keyway
Tol N B85	P9	Tolerance
N L85	12 mm	Length of Keyway
N T85	2,5 mm	Depth of Keyway, Tolerance P9
T 86	3,7 mm	Depth Fit
Tol T 86 up	0,2 mm	Upper Tolerance
Tol T 86 low	0 mm	Lower Tolerance
t 87 max	10 mm	



### Medidas

B <sub>1</sub>	56 mm	Width of Carriage
H <sub>1</sub>	14,2 mm	Height of Carriage
H <sub>2</sub>	41 mm	Altura
h <sub>13</sub>	22 mm	
L <sub>2 max</sub>	4.000 mm	Maximum length of Support Rail
L <sub>4</sub>	65 mm	
L <sub>5</sub>	8,5 mm	Length of Shaft Support Block without drive System
L <sub>21</sub>	2,5 mm	
S	40 mm	Medida



### Datos técnicos

$m_{LAW}$	0,41 kg	Mass of Carriage
$m_3$	0,41 kg	Mass of additional Carriage
$v_{max}$	4 m/s	Maximum Speed
$a_{max}$	20 m/s <sup>2</sup>	Maximum Acceleration
$R_x$	57 mm	
$R_y$	22,7 mm	
$R_z$	3 mm	
I C	1.750 N	Load direction I: compressive load
I C <sub>0</sub>	955 N	Load direction I: compressive load
II C	1.750 N	Load direction II: tensile load
II C <sub>0</sub>	955 N	Load direction II: tensile load
III C	6.000 N	Load direction III: lateral load
III C <sub>0</sub>	3.800 N	Load direction III: lateral load
M <sub>0x per</sub>	15 Nm	Max. permissible static moment per Carriage
M <sub>0y per</sub>	115 Nm	Max. permissible static moment per Carriage
M <sub>0z per</sub>	33 Nm	Max. permissible static moment per Carriage
I <sub>y</sub>	46 cm <sup>4</sup>	Geometrical moments of inertia of Support Rail
I <sub>z</sub>	17 cm <sup>4</sup>	Geometrical moments of inertia of Support Rail

### Información adicional

	5,6 Nm	Max. permissible drive torque
	3 x LFR50/8-6-2Z	Track Rollers
	0,1 mm	Repeat Accuracy ±
	85 mm	Feed (mm/rotation)
	25AT5	Toothed Belt
	0,082 kg/m	Mass of Toothed Belt
	420 N	Permissible Toothed Belt operating force
	0,1 kg*cm <sup>2</sup>	Mass moment of inertia of Gears and Gearboxes



### Rango de temperatura

---

T <sub>min</sub>	0 °C	Minimum operating Temperatur
------------------	------	------------------------------

T <sub>max</sub>	80 °C	Maximum operating Temperatur
------------------	-------	------------------------------