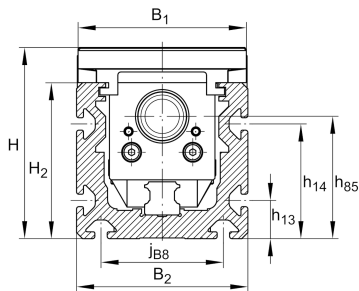


**MKUSE25-200-KGT-OA**

## Módulo lineal

Actuators with six-row linear recirculating bearing and guideway assembly, monorail guidance system and ball screw drive. Basic design, without ball screw drive (no spindle)

## Información técnica

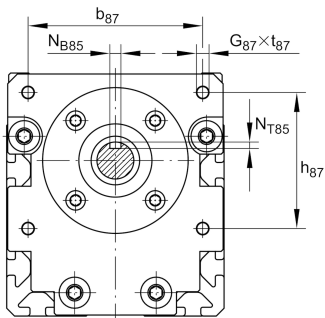
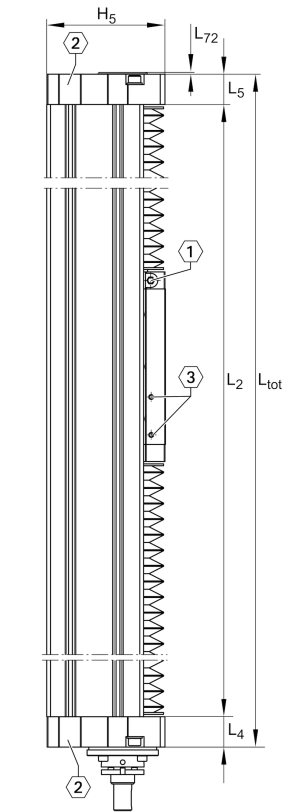


## Variante de su producto actual

Size code	25	
Length of carriage	200	200 mm
Drive type	OA	Without drive
Additional carriage	/	No additional carriage
Spindle support	/	None
Attachment to the carriage	/	Threaded holes

## Medidas principales y datos de rendimiento

L	200 mm	Length of Carriage
H	125 mm	Total Height
B <sub>2</sub>	112 mm	Total Width



### Medidas de montaje

B <sub>1</sub>	110 mm	Width of Carriage
G <sub>43</sub>	M10	Thread
h <sub>13</sub>	25 mm	
h <sub>14</sub>	75 mm	
J <sub>B43</sub>	80 mm	
Tol J <sub>B43</sub>	0,1	Upper Tolerance
Tol J <sub>B43</sub>	-0,1	Lower Tolerance
J <sub>L43</sub>	110 mm	Tolerance ±0,2
j <sub>B8</sub>	80 mm	
L <sub>2 max</sub>	5.850 mm	Maximum length of Support Rail
t <sub>43</sub>	20 mm	Depth of Thread

### Medidas

B <sub>5</sub>	111 mm	Width of End Plates
F <sub>BL</sub>	1,2	Effective length factor of bellow
H <sub>2</sub>	102 mm	Width of Support Rail
H <sub>5</sub>	124,5 mm	
L <sub>4</sub>	32 mm	
L <sub>5</sub>	32 mm	
L <sub>72</sub>	2 mm	



### Datos técnicos

$R_x$	83,3 mm	
$R_y$	93,8 mm	
S	10 mm	Safety Distance
$m_{LAW}$	3,37 kg	Mass of Carriage
IC	61.700 N	Load direction I: compressive load
I C <sub>0</sub>	162.000 N	Load direction I: compressive load
II C	42.200 N	Load direction II: tensile load
II C <sub>0</sub>	90.000 N	Load direction II: tensile load
III C	45.400 N	Load direction III: lateral load
III C <sub>0</sub>	94.000 N	Load direction III: lateral load
$M_{0x \text{ per}}$	1.350 Nm	Max. permissible static moment per Carriage
$M_{0y \text{ per}}$	1.850 Nm	Max. permissible static moment per Carriage
$M_{0z \text{ per}}$	2.000 Nm	Max. permissible static moment per Carriage
$I_y$	670 cm <sup>4</sup>	Geometrical moments of inertia of Support Rail
$I_z$	384 cm <sup>4</sup>	Geometrical moments of inertia of Support Rail

### Información adicional

2xKWSE25

Carriage

