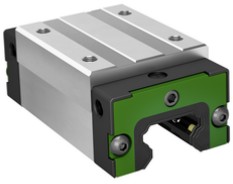


**KWLT30-H**

## Carro con recirculación de bolas

High carriage, standard end plate, for four-row linear recirculating ball bearing and guideway assembly



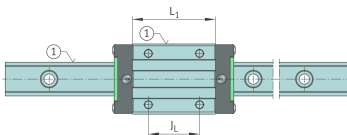
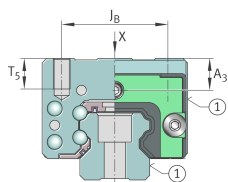
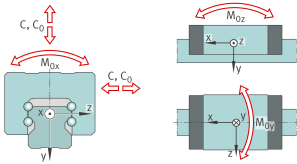
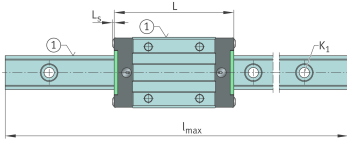
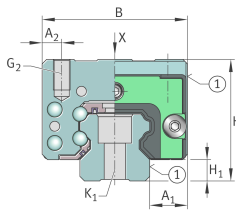
## Información técnica

## Variante de su producto actual

Size code	30	
Carriage design	H	High design

## Medidas principales y datos de rendimiento

H	45 mm	Altura sistema
B	60 mm	Width carriage
L	100,4 mm	Overall length carriage
C	27.500 N	Capacidad de carga dinámica
C <sub>0</sub>	49.500 N	Capacidad de carga estática
M <sub>0x</sub>	790 Nm	Static moment rating about X-axis
M <sub>0y</sub>	540 Nm	Static moment rating about Y-axis
M <sub>0z</sub>	540 Nm	Static moment rating about Z-axis
M <sub>0x</sub>	406 Nm	Dynamic moment rating about X-axis
M <sub>0y</sub>	493 Nm	Dynamic moment rating about y-axis
M <sub>0z</sub>	493 Nm	Dynamic moment rating about Z-axis
≈m	0,91 kg	Peso





### Medidas de montaje

---

A <sub>1</sub>	16 mm	
A <sub>2</sub>	10 mm	
L <sub>1</sub>	67,4 mm	Carrier length
H <sub>1</sub>	9 mm	
J <sub>B</sub>	40 mm	
J <sub>L</sub>	40 mm	
A <sub>3</sub>	11 mm	Posición del conector de lubricación
T <sub>5</sub>	11 mm	
G <sub>2</sub>	M8	Thread size, DIN ISO 4762-12.9
G2 M <sub>A</sub>	40 Nm	Par de apriete máximo

### Información adicional

---

VMKB_065	KWLT	Nombre de material
----------	------	--------------------