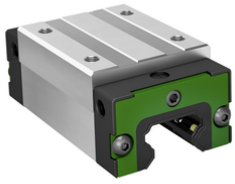




### KWLT25-H-V1-G4 [↗](#)

Carro con recirculación de bolas

High carriage, standard end plate, for four-row linear recirculating ball bearing and guideway assembly



## Información técnica

### Variante de su producto actual

|                 |    |                           |
|-----------------|----|---------------------------|
| Size code       | 25 |                           |
| Carriage design | H  | High design               |
| Precarga        | V1 | Slight preload (standard) |
| Accuracy class  | G4 |                           |

### Medidas principales y datos de rendimiento

|                 |          |                                    |
|-----------------|----------|------------------------------------|
| H               | 40 mm    | Altura sistema                     |
| B               | 48 mm    | Width carriage                     |
| L               | 81,8 mm  | Overall length carriage            |
| C               | 19.900 N | Capacidad de carga dinámica        |
| C <sub>0</sub>  | 36.500 N | Capacidad de carga estática        |
| M <sub>0x</sub> | 480 Nm   | Static moment rating about X-axis  |
| M <sub>0y</sub> | 340 Nm   | Static moment rating about Y-axis  |
| M <sub>0z</sub> | 340 Nm   | Static moment rating about Z-axis  |
| M <sub>0x</sub> | 240 Nm   | Dynamic moment rating about X-axis |
| M <sub>0y</sub> | 305 Nm   | Dynamic moment rating about y-axis |
| M <sub>0z</sub> | 305 Nm   | Dynamic moment rating about Z-axis |
| ≈m              | 0,52 kg  | Peso                               |





### Medidas de montaje

---

|                   |         |                                      |
|-------------------|---------|--------------------------------------|
| A <sub>1</sub>    | 12,5 mm |                                      |
| A <sub>2</sub>    | 6,5 mm  |                                      |
| L <sub>1</sub>    | 57 mm   | Carrier length                       |
| H <sub>1</sub>    | 7 mm    |                                      |
| J <sub>B</sub>    | 35 mm   |                                      |
| J <sub>L</sub>    | 35 mm   |                                      |
| A <sub>3</sub>    | 10,5 mm | Posición del conector de lubricación |
| T <sub>5</sub>    | 10 mm   |                                      |
| G <sub>2</sub>    | M6      | Thread size, DIN ISO 4762-12.9       |
| G2 M <sub>A</sub> | 16,5 Nm | Par de apriete máximo                |

### Información adicional

---

|          |      |                    |
|----------|------|--------------------|
| VMKB_065 | KWLT | Nombre de material |
|----------|------|--------------------|