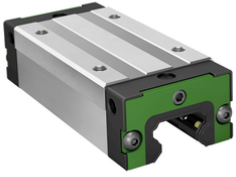


**KWLT35-S**

Carro con recirculación de bolas

Slim carriage, standard end plate, for four-row linear recirculating ball bearing and guideway assembly



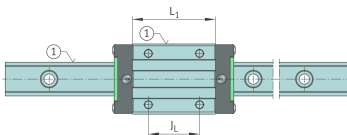
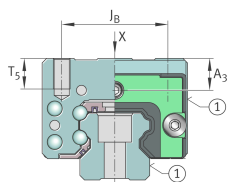
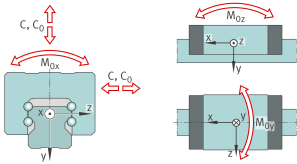
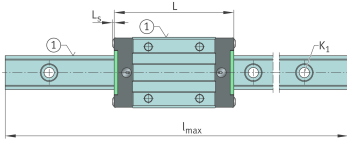
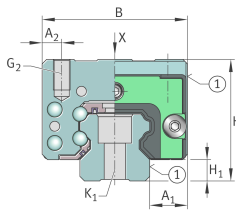
Información técnica

Variante de su producto actual

Size code	35	
Carriage design	S	Narrow design

Medidas principales y datos de rendimiento

H	48 mm	Altura sistema
B	70 mm	Width carriage
L	114 mm	Overall length carriage
C	36.500 N	Capacidad de carga dinámica
C ₀	65.000 N	Capacidad de carga estática
M _{0x}	1.270 Nm	Static moment rating about X-axis
M _{0y}	800 Nm	Static moment rating about Y-axis
M _{0z}	800 Nm	Static moment rating about Z-axis
M _{0x}	664 Nm	Dynamic moment rating about X-axis
M _{0y}	746 Nm	Dynamic moment rating about y-axis
M _{0z}	746 Nm	Dynamic moment rating about Z-axis
≈m	1,2 kg	Peso





Medidas de montaje

A ₁	18 mm	
A ₂	10 mm	
L ₁	77 mm	Carrier length
H ₁	9,5 mm	
J _B	50 mm	
J _L	50 mm	
A ₃	8 mm	Posición del conector de lubricación
T ₅	10 mm	
G ₂	M8	Thread size, DIN ISO 4762-12.9
G2 M _A	40 Nm	Par de apriete máximo

Información adicional

VMKB_065	KWLT	Nombre de material
----------	------	--------------------