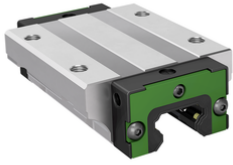


**KWLT35-AL-V0-G4** [↗](#)

Carro con recirculación de bolas

Long flanged carriage, standard end plate, for four-row linear recirculating ball bearing and guideway assembly



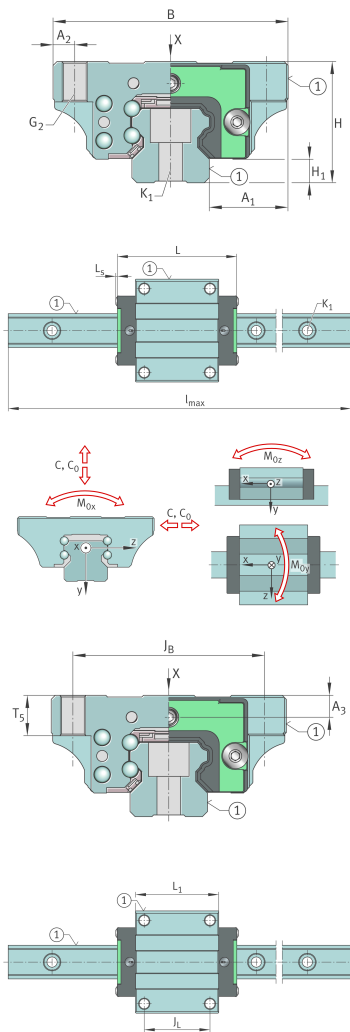
Información técnica

Variante de su producto actual

| | | |
|-----------------|----|------------------|
| Size code | 35 | |
| Carriage design | AL | Long design |
| Precarga | V0 | Slight clearance |
| Accuracy class | G4 | |

Medidas principales y datos de rendimiento

| | | |
|-----------------|----------|------------------------------------|
| H | 48 mm | Altura sistema |
| B | 100 mm | Width carriage |
| L | 142,5 mm | Overall length carriage |
| C | 45.000 N | Capacidad de carga dinámica |
| C ₀ | 86.000 N | Capacidad de carga estática |
| M _{0x} | 1.680 Nm | Static moment rating about X-axis |
| M _{0y} | 1.390 Nm | Static moment rating about Y-axis |
| M _{0z} | 1.390 Nm | Static moment rating about Z-axis |
| M _{0x} | 807 Nm | Dynamic moment rating about X-axis |
| M _{0y} | 1.224 Nm | Dynamic moment rating about y-axis |
| M _{0z} | 1.224 Nm | Dynamic moment rating about Z-axis |
| m | 2,02 kg | Peso |





Medidas de montaje

| | | |
|-------------------|----------|--------------------------------------|
| A ₁ | 33 mm | |
| A ₂ | 9 mm | |
| L ₁ | 105,5 mm | Carrier length |
| H ₁ | 9,5 mm | |
| J _B | 82 mm | |
| J _L | 62 mm | |
| A ₃ | 8 mm | Posición del conector de lubricación |
| T ₅ | 13 mm | |
| G ₂ | M10 | Thread size, DIN ISO 4762-12.9 |
| G2 M _A | 81 Nm | Par de apriete máximo |

Información adicional

| | | |
|----------|------|--------------------|
| VMKB_065 | KWLT | Nombre de material |
|----------|------|--------------------|