



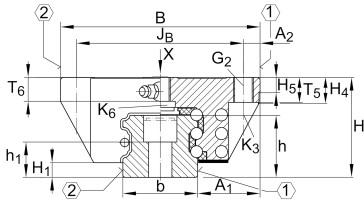
### KUSE20-L [↗](#)

Sistema con recirculación a bolas

Carros largos para sistemas con recirculación de seis hileras de bolas

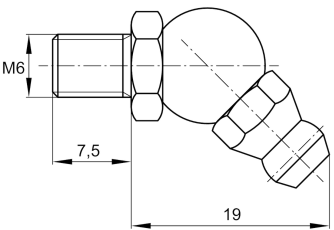
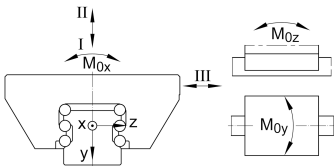
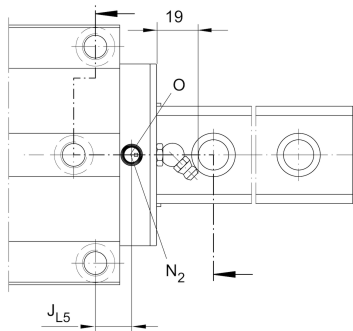
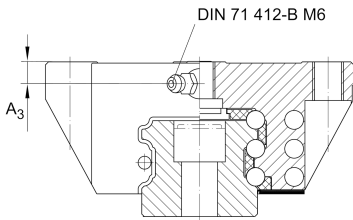
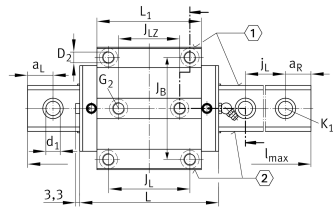
X-life

## Información técnica



### Variante de su producto actual

|                 |    |             |
|-----------------|----|-------------|
| Size code       | 20 |             |
| Carriage design | L  | Carro largo |



**Medidas de montaje**

|         |           |                           |
|---------|-----------|---------------------------|
| A 1     | 21,5 mm   |                           |
| J B     | 53 mm     |                           |
| b       | 20 mm     | Anchura de la guía        |
| Tol b   | -0,005 mm | Tolerancia superior       |
| Tol b   | -0,03 mm  | Lower tolerance           |
| A 2     | 5 mm      |                           |
| L 1     | 72,9 mm   |                           |
| J L     | 40 mm     |                           |
| J LZ    | 35 mm     |                           |
| j L     | 60 mm     |                           |
| a L min | 20 mm     |                           |
| a L max | 53 mm     |                           |
| a R min | 20 mm     |                           |
| a R max | 53 mm     |                           |
| H 1     | 4,6 mm    |                           |
| H 4     | 10,6 mm   |                           |
| H 5     | 5 mm      |                           |
| T 5     | 10 mm     |                           |
| T 6     | 7,2 mm    |                           |
| h       | 18 mm     |                           |
| h 1     | 9,6 mm    |                           |
| Tol h 1 | 0,5 mm    | Tolerancia superior       |
| Tol h 1 | -0,5 mm   | Distance Distance         |
| G 2     | M6        | Fixing screws             |
| G 2 MA  | 10 Nm     | Maximum tightening torque |
| K 1     | M5        | Fixing screws             |
| K 1 MA  | 10 Nm     | Tightening torque         |
| K 3     | M5        | Fixing screws             |
| K 3 MA  | 10 Nm     | Par de apriete máximo     |



### Medidas principales

|           |          |                                  |
|-----------|----------|----------------------------------|
| $l_{max}$ | 3.900 mm | Max length single piece guideway |
| H         | 30 mm    | Altura sistema                   |
| B         | 63 mm    | Width carriage                   |
| L         | 91,9 mm  | Overall length carriage          |

### Datos técnicos

|                     |          |   |
|---------------------|----------|---|
| I: C                | 35.000 N | Load direction I: compressive load              |
| I: C <sub>0</sub>   | 83.000 N | Load direction I: compressive load              |
| II: C               | 25.000 N | Load direction II: tensile load                 |
| II: C <sub>0</sub>  | 47.000 N | Load direction II: tensile load                 |
| III: C              | 26.000 N | Load direction III: lateral load                |
| III: C <sub>0</sub> | 48.000 N | Load direction III: lateral load                |
| M <sub>0x</sub>     | 730 Nm   | Capacidad de momento estático momento del eje X |
| M <sub>0y</sub>     | 640 Nm   | Capacidad de momento estático del eje Y         |
| M <sub>0z</sub>     | 570 Nm   | Capacidad de momento estático del eje Z         |

### Productos relacionados

|          |          |
|----------|----------|
| KWSE20-L | Carriage |
| TKSD20   | Guideway |