



IMAGE
COMING SOON

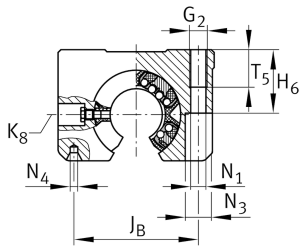
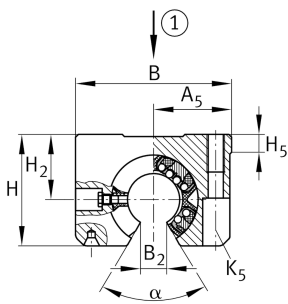


KTSO20-PP-AS [↗](#)

Unidad de rodamiento lineal de bolas

Linear ball bearing and housing unit; open design, with self-aligning linear ball bearing, contact seals on both sides

Información técnica



Variante de su producto actual

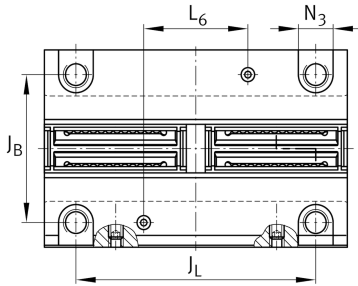
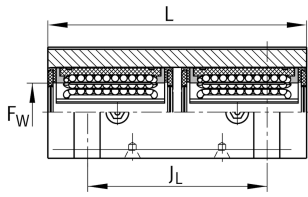
Size code	20
Seal	PP
Función de relubricación	AS

Medidas principales y datos de rendimiento

F _W	20 mm	Diameter of ball complement
H	42 mm	Height
L	96 mm	Longitud
B	60 mm	Anchura
C _{max}	3.500 N	Load capacity dyn.
C _{0 max}	4.600 N	Load capacity stat.
≈m	0,52 kg	Peso



Medidas de montaje



J _B	45 mm	
Tol J _B	+ 0,15 mm	Upper tolerance
Tol J _B	- 0,15 mm	Lower tolerance
A ₅	30 mm	
Tol A ₅	+ 0,01 mm	Upper tolerance
Tol A ₅	- 0,01 mm	Lower tolerance
B ₂	10 mm	
J _L	76 mm	Distance
Tol J _L	+ 0,15 mm	Upper tolerance
Tol J _L	- 0,15 mm	Lower tolerance
L ₆	33 mm	Distance
H ₂	25 mm	Center height
Tol H ₂	+ 0,008 mm	Upper tolerance
Tol H ₂	- 0,016 mm	Lower tolerance
H ₅	8 mm	
T ₅	18 mm	
H ₆	24 mm	
G ₂	M8	
N ₁	6,6 mm	
N ₄	2x4.25	
N ₃	11 mm	
K ₅	M6	
K ₈	NIP4MZ	Lubrication nipple
	6	Ball rows
α	55 °	Angle